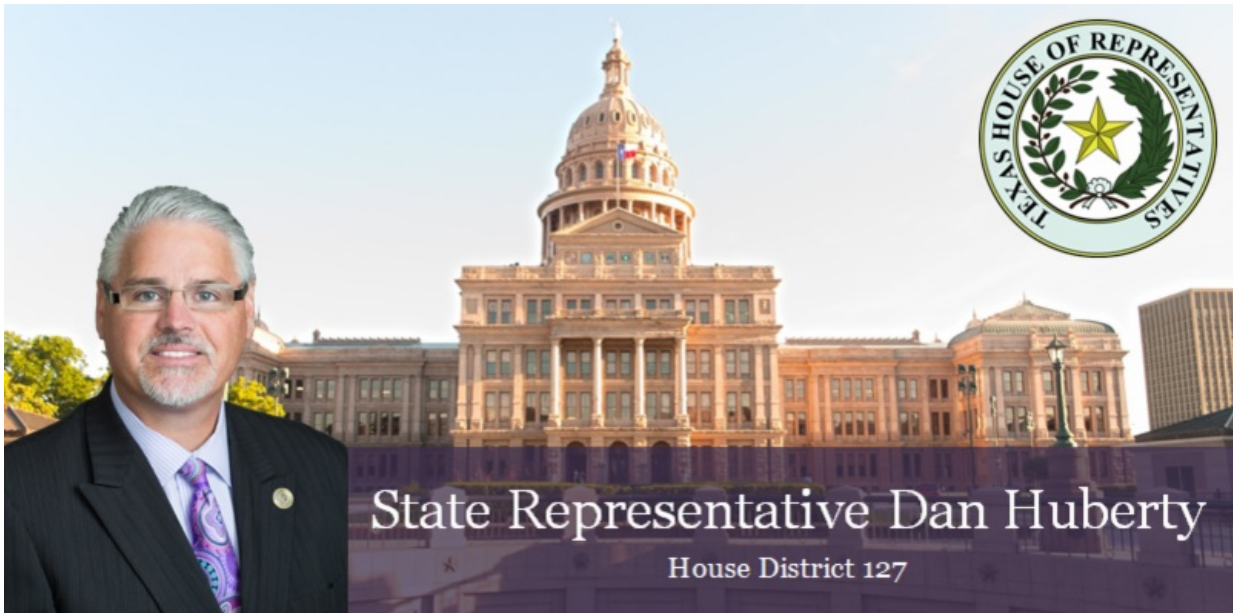


Thank you for your subscription to Rep. Dan Huberty's Newsletter. If you wish to unsubscribe, please use the SafeUnsubscribe option at the bottom of this email.



March 23, 2018

Thank you for subscribing to my e-newsletter. I hope that you and your family are having a great week back at school after Spring Break. This week was my son Ryan's birthday. We were so happy to celebrate him as he turned 16.

On Monday, I was in Austin for a Commission on Public School Finance meeting. We listened to 12 hours of testimony from the education community who expressed the need for change to Texas's current public school finance system. I was specifically heartened to hear the various witnesses as well as the commissioners discuss in depth the need to address the current under funding for students with dyslexia in the state.

Tuesday morning, I remained in Austin for the inaugural meeting of the Expenditures work group of the commission. We heard from various experts from across the state and discussed the specifics of the school finance formulas and allocation of funding. We focused on many topics, including: the cost of education index, compensatory education, special education, transportation, the high school allotment and much more. [You can watch a broadcast of the work group meeting here.](#)

My Austin-based staff will be relocated into their normal office in the Capitol extension on Monday, March 26. If you are in Austin, be sure to stop by to check out the new renovations. My staff is always happy to see constituents in Austin. Remember, they can arrange private tours of the Capitol for you and your family, so please be sure to call before your visit!

I hope that you and your family have a great weekend.

Sincerely,



## Upcoming Events

March 2018 Calendar

Download my March 2018 calendar by clicking the link below. This month is full of events in and around Texas that could fun or useful to you and your family! This new format allows you to save the document for printing or sending to your family members.

Monday	Tuesday	Wednesday	Thursday	Friday	Saturday
				March 1st St. Patrick's Day	March 2nd St. Patrick's Day
	March 3rd St. Patrick's Day	March 4th St. Patrick's Day	March 5th St. Patrick's Day	March 6th St. Patrick's Day	March 7th St. Patrick's Day
March 8th St. Patrick's Day	March 9th St. Patrick's Day	March 10th St. Patrick's Day	March 11th St. Patrick's Day	March 12th St. Patrick's Day	March 13th St. Patrick's Day
March 14th St. Patrick's Day	March 15th St. Patrick's Day	March 16th St. Patrick's Day	March 17th St. Patrick's Day	March 18th St. Patrick's Day	March 19th St. Patrick's Day
March 20th St. Patrick's Day	March 21st St. Patrick's Day	March 22nd St. Patrick's Day	March 23rd St. Patrick's Day	March 24th St. Patrick's Day	March 25th St. Patrick's Day
March 26th St. Patrick's Day	March 27th St. Patrick's Day	March 28th St. Patrick's Day	March 29th St. Patrick's Day	March 30th St. Patrick's Day	March 31st St. Patrick's Day

[Click Here to View and Download This Month's Calendar!](#)

## Hurricane Harvey Recovery Resources

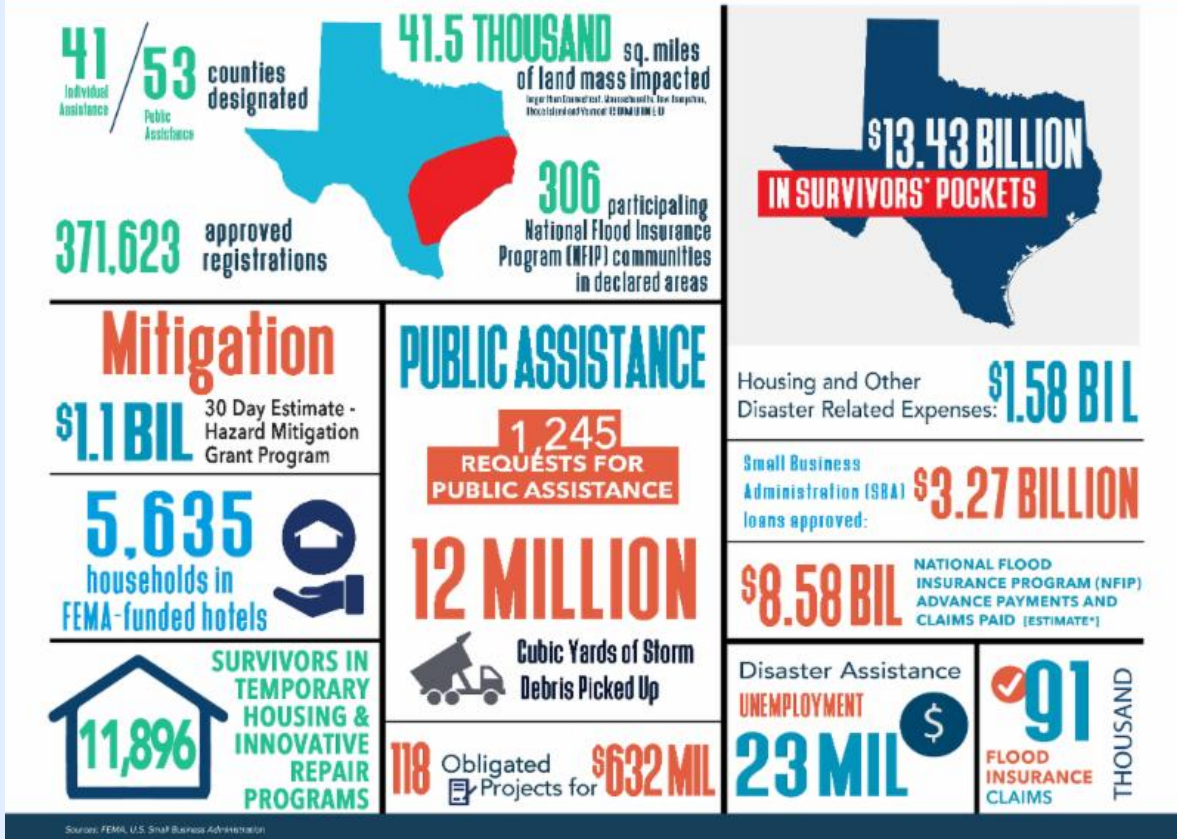
PREPs Has Now Serviced Over 10,000 Homes



Texas Governor Greg Abbott and Land Commissioner George P. Bush announced more than 10,000 homes have received repairs through the [Partial Repair and Essential Power for Sheltering \(PREPS\)](#) Program in coordination with the Federal Emergency Management Agency (FEMA). The program is designed to help homeowners whose home received less than \$17,000 in FEMA verified loss resulting from Hurricane Harvey. The program provides basic repairs that allow homeowners to live in their homes and their communities as they make more permanent repairs to their homes. Up to \$20,000 in repairs, including restoring electricity, air conditioning/heating, and hot water, debris removal, limited drywall and insulation, and restoring a functional bathroom and kitchen facilities, have been provided to return the homes to a standard of safe, sanitary and secure.

[Read more from the General Land Office by clicking here.](#)

## Texas Recovery Update



## House District 127 Updates

### I-69 Lane Closures - Expect Delays

Please see below for details of MAJOR closures that will facilitate continued preparations for the emergency repairs for the IH 69 Southbound Mainlanes Bridge at the San Jacinto River, near Kingwood/Humble. The graphic reflects the final configuration required to complete the repairs.

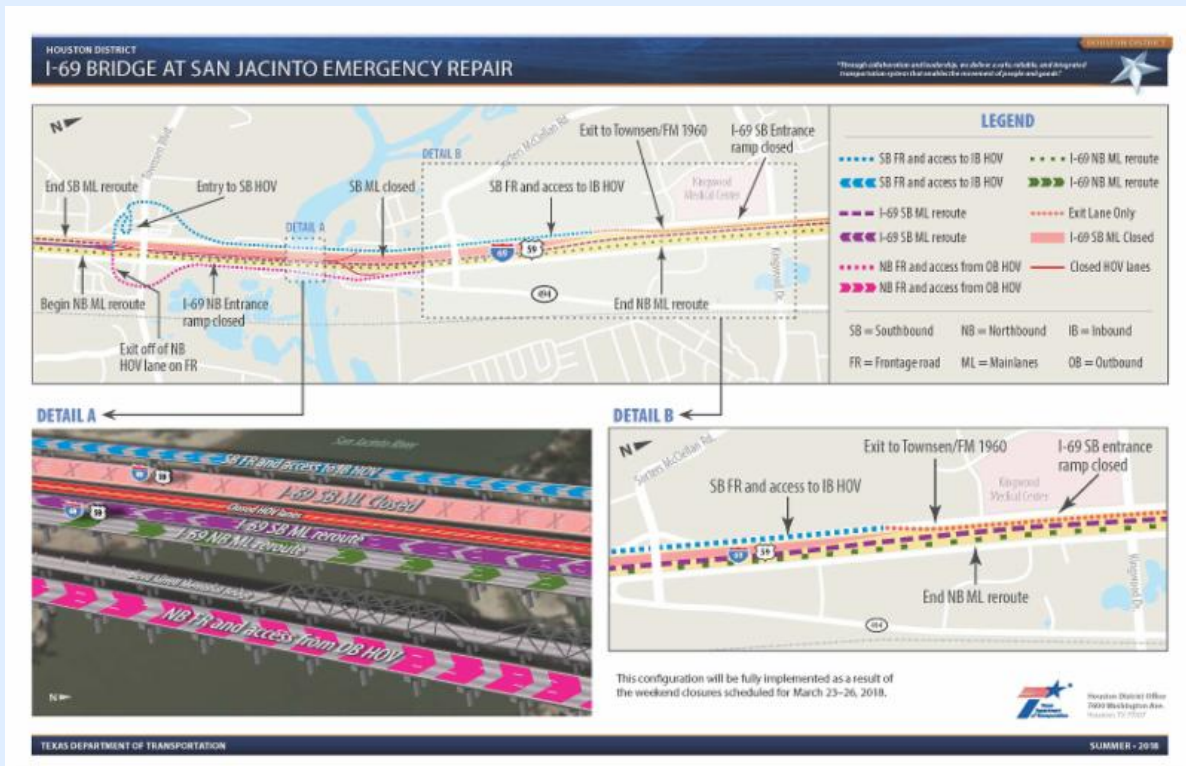
**Motorists should expect delays and are strongly encouraged to seek alternate routes.**

TxDOT is continually partnering with its contractor as they work toward a goal of completing the emergency repairs as quickly as possible. These closures have been input into the TxDOT PIO system and can be found at [www.houstontranstar.org](http://www.houstontranstar.org).

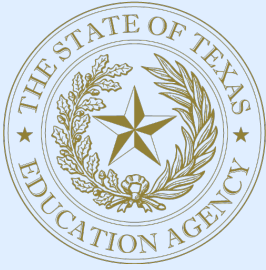
1. I-69 Eastex northbound entrance ramp from FM 1960/Townsen: Total closure continuously through 5:00 PM on Sunday, August 12, 2018.. Detour northbound on the frontage road to the entrance ramp from Sorters McClellan Rd.
2. I-69 Eastex northbound mainlanes between FM 1960 to Kingwood Dr.: Two left lanes closed continuously through 5:00 PM on Sunday, August 12, 2018 . Three mainlanes will remain open.
3. I-69 Eastex southbound entrance ramp from Kingwood Dr.: Total closure continuously through 5:00 PM on Sunday, August 12, 2018. Detour southbound on the frontage road to the entrance ramp from Townsen Blvd.
4. I-69 Eastex southbound frontage road between Kingwood Dr. and Sorters McClellan Rd.: One Left lane closed continuously through 5:00 PM on Sunday, August 12, 2018.
5. I-69 Eastex southbound frontage road between Kingwood Dr. and Sorters McClellan Rd.: Two Left lanes closed nightly from 8:00 PM to 5:00 AM on Thursday, March 22.
6. I-69 Eastex southbound exit ramp to Sorters McClellan Rd./Townsen: Total closure nightly between 8:00 PM and 5:00 AM on Thursday, March 22. Detour southbound on the mainlanes to the exit ramp to FM 1960. Follow the Frontage Rd to the U-turn at FM 1960; Follow the U-Turn at FM 1960 to the northbound frontage road. Follow the Northbound Frontage Rd. to Townsen or Sorters McClellan Rd.
7. I-69 Eastex southbound mainlanes between Northpark Dr. and FM 1960: Two right lanes

- closed nightly from 8:00 PM to 5:00 AM on Thursday, March 22.
8. I-69 Eastex HOV/Express Lanes between Kingwood Dr. and the Townsen Park & Ride: Total closure continuously from 9:00 PM on Friday, March 23 through 4:00 AM on Monday, August 13, 2018. Southbound Detour via the entrance from the Townsen Park and Ride. Northbound Detour via the exit at the Townsen Park and Ride.
  9. I-69 Eastex northbound mainlanes between FM 1960 to Kingwood Dr.: One Additional Left lane closed continuously between 8:00 PM on Friday, March 23 and 5:00 PM on Saturday, March 24
  10. I-69 Eastex southbound mainlanes between FM 1314 and FM 1960: Three right lanes closed continuously from 9:00 PM on Friday, March 23 through 2:00 AM on Saturday, March 24. At least one mainlane will remain open.
  11. I-69 Eastex southbound exit ramp to Sorters McClellan Rd./Townsen: Total closure continuously 9:00 PM on Friday, March 23 through 2:00 AM on Saturday, March 24. Detour southbound on the mainlanes to the exit ramp to FM 1960. Follow the Frontage Rd to the U-turn at FM 1960; Follow the U-Turn at FM 1960 to the northbound frontage road. Follow the northbound frontage rd. to Townsen or Sorters McClellan Rd.
  12. I-69 Eastex southbound entrance ramp from Sorters McClellan Rd.: Total closure continuously from 9:00 PM on Friday, March 23 through 10:00 AM on Saturday, March 24. Detour southbound on the frontage road to the entrance ramp from Townsen Blvd.
  13. I-69 Eastex southbound mainlanes between FM 1314 and FM 1960: Total Closure continuously from 2:00 AM on Saturday, March 24 through 5:00 AM on Monday, March 26. Traffic will be detoured to the southbound frontage road via the Sorters McClellan Rd./Townsen/ FM 1960 exit ramp, Follow the southbound frontage road to the next ramp. (Note: There are NO signalized intersections or intersections with stop signs within the detour route.)
  14. I-69 Eastex southbound mainlanes between Kingwood Dr. and FM 1960: Two Right lanes closed continuously through 5:00 PM on Sunday, August 12, 2018. Three mainlanes will remain open.
  15. I-69 Eastex southbound exit ramp to FM 1960: Total closure continuously between 9:00 PM on Friday, March 23 through 5:00 PM on Sunday, August 12, 2018. Detour southbound on the mainlanes to the exit ramp to Sorters McClellan Rd./Townsen/FM 1960. Follow the Southbound Frontage Rd. to Sorters McClellan Rd., Townsen or FM 1960.
  16. I-69 Eastex Turnaround Road from W Hamblen Rd to Hamblen Rd: Total closure daily between 9:00 AM and 3:00 PM between Wednesday, March 21 and Sunday, April 01. Detour from Hamblin Rd: Northbound on Loop 494 to Kingwood Dr.; Detour from McClellan Rd: Southbound on the Southbound Frontage Rd. to FM 1960.

All closures are subject to cancellation or modification due to adverse weather. For more information please call the TxDOT Public Information Office at 713.802.5076.



# TEA Posts Draft Plan for Special Education Compliance



The Texas Education Agency (TEA) has posted a comprehensive draft strategic plan for special education. The plan, which includes components of a corrective action response that will be sent to the U.S. Department of Education, is available for review and public comment through April 6, 2018.

“The purpose of special education is to provide sufficient support to our students with disabilities, on an individualized basis so that they can obtain the same level of academic success typical of their peers,” reads the executive summary of the TEA Special Education Strategic Plan.

“Working together, we will significantly improve outcomes for our special education students.”

TEA drafted an initial corrective action response regarding the support and delivery of special education services in our state’s public schools. That initial draft (shared publicly on Jan. 18, 2018) addressed all issues identified in a federal monitoring report, including the proper identification of special education students and assuring access to appropriate services at the local level.

[Read the Corrective Action Plan and more from TEA by clicking here.](#)

## Constituent Resources

### Need Assistance?

Our office is always ready to assist you. Call or email us and we will do our best to help. Many State Agencies also have hotlines or citizen assistance offices to assist you. That contact information is available at this link, in alphabetical order:

<http://www.lrl.texas.gov/genInfo/stateAgencies.cfm>

## Live Updates

All of the relevant information our office has fathered in regard to response and recovery of Hurricane Harvey is posted immediately to our Facebook page. Be sure to "like" us so that you can have the most up to date information. Click the image below to find our page.



## Contact Information

### State Representative

**Dan Huberty**

[Email Dan](#)

### Casey Christman

**Chief of Staff**

[Email Casey](#)

**Molly Spratt**  
**Legislative Director**

[Email Molly](#)

### Capitol Physical Address:

1100 Congress Avenue  
E2.408 Austin, TX 78701

### Capitol Mailing Address:

P.O. Box 2910  
Austin, TX 78768

### Capitol Phone:

(512) 463-0520

### Capitol Fax:

(512) 463-1606

### District Address:

4501 Magnolia Cove  
Suite 201  
Kingwood, TX 77345

### District Phone:

(281) 360-9410