



‘TIS THE SEASON

2013



## *House Chamber Christmas Tree*

### *2013*

Celebrate the season and view the creativity of Texans from across the state. The House Chamber Christmas Tree is currently on display and features visual representations of what makes each House district special.

For the fifth consecutive year, members of the Texas House of Representatives were invited to decorate the Chamber Christmas Tree with an ornament created in their district. This unique collection now hangs proudly on a native Texas tree celebrating the many facets of our nation's second largest state, home to over 26 million people.

The following pages provide a closer look at these handcrafted treasures. Many ornaments have been received with still more to come. Ornaments are featured by district number.

Should you need assistance, the link provided will help you find your representative and district number: <http://www.house.state.tx.us/members/find-your-representative/>.

\*\*\*

*The Texas House of Representatives is proud to display trees provided by the Texas Christmas Tree Growers Association throughout the Capitol Building, including this 21-foot Virginia Pine, compliments of Elves Farm in Denison, the three 7-foot Virginia Pines, compliments of McNew Star M Christmas Tree Plantation in Hunt County, and two 8-10 foot Fraser Firs from Elgin.*





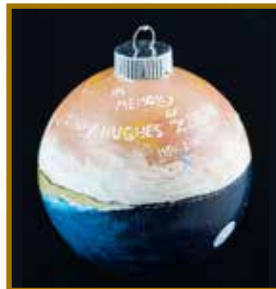
IN LOVING MEMORY OF  
*Cindy Hughes Zerwas*



*When* Cindy passed away on August 20, 2013, the Texas Legislature lost a wonderful friend and Representative John Zerwas lost his life partner.

Cindy enriched every one of the many lives she touched. Remembering her beautiful smile, sparkling enthusiasm, grace, and selflessness as well as her happiest times as devoted and beloved wife and cherished mother and grandmother is a gift we, her friends, will always be grateful for. Rest in peace in His loving, healing arms, Cindy.

Cindy and John's son Brandon hand-painted the peaceful coastal scene on this ornament in celebration of her life.





# REPRESENTATIVE GEORGE LAVENDER

*District 1*



*The* cowboy atop the ornament welcomes visitors, while a painted sky holds the courthouses of Lamar and Franklin counties, a Texas Annexation medal, and a Bowie County historical marker. The red ribbon encircling the ornament represents historic Red River County and the Red River that binds us all together as House District 1.

*Artist: Dominant Betts  
CK Bender Elementary School*



## REPRESENTATIVE DAN FLYNN

*District 2*



*Hand-painted by a student at Sulphur Springs High School, this ornament features a classic, minimalist version of the Nativity scene in shades of blue and silver.*

*Artist: Alex Riels  
Sulphur Springs High School*



## REPRESENTATIVE CECIL BELL, JR.

*District 3*



*The* predominantly rural nature and Texas spirit of District 3 are depicted in this ornament through the painting of a Texas Longhorn with a Texas flag draped across it and the motto “God Bless Texas!”

*Artist: Barry Carter, Jr.  
Texas Christian University*



## REPRESENTATIVE LANCE GOODEN

*District 4*



*The children's fingerprints on this ornament, decorated by the Forney Art Council (FAC), are a fitting symbol of a district that celebrates its youngest residents' creativity.*

*Artist: JoAnna Piedra  
Forney Art Council*





## REPRESENTATIVE MATT SCHAEFER

*District 6*



*The* rose painted on this ornament honors the city nicknamed the “Rose Capital of the World,” as well as the Texas Rose Festival held there each fall. Also depicted are the Tyler Junior College Apache Belles, a drill team that has represented Tyler and the State of Texas nationally and internationally.

*Artist: Mariah Martin*



## REPRESENTATIVE DAVID SIMPSON

*District 7*



*This* hot air balloon celebrates the Great Texas Balloon Race, an annual event in District 7. Since 1978, the race has supported the community while drawing ballooning teams from all over the country to Longview.

*Artist: Jessica Walters  
Christian Heritage School*



## REPRESENTATIVE BYRON COOK

*District 8*



*Painted* on the ornament is the Freestone County Courthouse, along with the names of Navarro County, Anderson County and Hill County. Local flora, including dogwood, bluebonnets, Indian paintbrushes, holly flowers and freestone peaches, are also depicted. The frosty background illustrates the chilly winters typical of District 8.

*Artist: Hannah Spradlin  
Fairfield High School*



## REPRESENTATIVE CHRIS PADDIE

*District 9*



*L*ocated in District 9, the City of Marshall will be celebrating the 26th anniversary of the Wonderland of Lights this year. This ornament depicts the spirit of Christmas that shines throughout Marshall as millions of tiny lights transform the city into a winter wonderland.

*Artist: Nanci Whatley  
Fourth Grade Art Club, David Crockett Texas ACE*



## REPRESENTATIVE JIM PITTS

*District 10*



*The* ornaments for District 10, which includes Henderson and Ellis Counties, were handcrafted by the residents of the Pleasant Manor Health and Rehabilitation Center. The color purple represents the unity of the House of Representatives, as is demonstrated daily by the members of the 83rd Legislature. The ornaments' unusual shapes were chosen to recognize the uniqueness of Texas and all its residents.

*Artists: Pleasant Manor Health and Rehabilitation Center*



## REPRESENTATIVE TRAVIS CLARDY

*District 11*



*Officially* named the Garden Capital of Texas in 2013, Nacogdoches features beautiful gardens, gorgeous flowers, majestic trees, and open skies. This ornament depicts a joyful garden complete with layered landscaping, outdoor sculptures and wildlife.

*Artist: Jeffie Brewer*



## REPRESENTATIVE KYLE KACAL

*District 12*



*Newly-established District 12 was created to give rural central Texans a voice in the Legislature. It is comprised of Falls, Limestone and Robertson counties, as well as portions of Brazos and McLennan counties, each of which is depicted on the pendants hanging from the five points of the Texas star. The star's golden texture was created with a burlap sack, representative of the agricultural base of the district.*

*(Photo credit Larry D. Moore)*

*Artist: Mrs. Marci Kacal*



# REPRESENTATIVE LOIS W. KOLKHORST

*District 13*



*The* stars on this ornament shine brightly over the birthplace of Texas:  
Washington-on-the-Brazos, the site in District 13 where the  
Texas Declaration of Independence was signed on March 2, 1836.  
A merry Christmas and peace to all is wished for the men,  
women and children who make our state great!

*Artist: Terry A. Boeker*





## REPRESENTATIVE JOHN RANEY

*District 14*



*This* ornament depicts the excitement of children growing up in District 14 hoping to one day become Aggies. From enjoying football games at Kyle Field to marching like members of the Aggie Band and taking pictures with Reveille, these kids live all the traditions of Texas A&M University. The ornament also includes the names of Representative John Raney's six grandchildren and their future graduation years.

*Artists: Beth Raney Hawkins and Raney Caroline Hawkins*



## REPRESENTATIVE STEVE TOTH

*District 15*



*This ornament features three prominent sights found in District 15: the famous Woodlands Outdoor Sculptures, the Cynthia Woods Pavilion and the Woodlands Waterway with tour boats.*

*Artist: Vickie McMillan  
Safari Club International and Houston Safari Club*



## REPRESENTATIVE TIM KLEINSCHMIDT

*District 17*



Each frame of the film strip depicts a landmark from Smithville: the angel from the Veterans Memorial Park; Smitty the Gingerbread Man; the welcome sign referencing “Hope Floats,” which was filmed in Smithville; one of the water towers; and city’s location on the state map.

*Artists: Alora Nichols and Natalie Frerich (teacher)  
Smithville High School*



## REPRESENTATIVE JOHN OTTO

*District 18*



*The* blue and gold on this ornament represents Sam Houston State University, located in Huntsville, Texas. Huntsville is the county seat of Walker County, which joins Liberty and San Jacinto counties to make up District 18.

*Artist: Ashton Leath*

*Sam Houston State University Student Art Association*



# REPRESENTATIVE MARSHA FARNEY

*District 20*



*The* District 20 ornament was created by a group of art students wishing to honor one of their favorite sweets, pecan pie. During the 83rd Regular Session this past spring, Representative Farney passed a resolution naming the gooey, nutty dessert as the official state pie of Texas.

*Artists: Jenny Yentzen's Art Class  
Ford Elementary School*



## REPRESENTATIVE GREG BONNEN

*District 24*



*The District 24 ornament highlights the cities and sights that make the district unique, including League City, Kemah, Clear Lake, Friendswood and NASA.*

*Artist: Kelly Halbach*



# REPRESENTATIVE DENNIS BONNEN

*District 25*



*Watercolors and 3D media are used on the District 25 ornament to depict an angel of God. "This district is filled with God's angels," wrote the artist.*

*Artist: Eszter Weress  
Brazosport Art League*



## REPRESENTATIVE RICK MILLER

*District 26*



*The* ornament for District 26 features the newly dedicated Sugar Land Veteran's Memorial. Also depicted is a representation of the "Honor and Remember" flag. During the 83rd Legislative Session, Representative Miller carried the Honor and Remember bill to adopt the flag for Texans to fly on selected days during the year.

*Artist: Jeanne Dazey*





## REPRESENTATIVE JOHN ZERWAS

*District 28*



*The* District 28 ornament resulted from a collaboration with more than 10 artists in the City of Fulshear and Fort Bend County area. Their abstract design combines many icons representing the district, such as a cactus typical of the arid landscape and an apple symbolizing health initiatives.

*Artists: Terri Bieber, Marcia Simmons, and others  
ARTreach Fort Bend and Fulshear Arts*



## REPRESENTATIVE ED THOMPSON

*District 29*



*The* recycled material used to create this “partridge in a pear tree” ornament represents the good stewards and resourceful people who make up District 29 in Brazoria County. The artist wishes everyone a wonderful holiday “On the First Day of Christmas” and throughout the season!

*Artist: Anonymous*



# REPRESENTATIVE GEANIE MORRISON

*District 30*



*The ornament for District 30 recognizes the cities within the district through a traditional Christmas scene.*

*Artist: Neldene Matusевич*



## REPRESENTATIVE RYAN GUILLEN

*District 31*



*R*ich in history, landscape and natural resources, District 31 is home to South Texans in Atascosa, Brooks, Duval, Kenedy, Jim Hogg, La Salle, Live Oak, McMullen, Starr and Willacy counties. This ornament honors them all with a scene depicting a sunset over the district's rolling hills and brush land.

*Artist: Felix Daniel Lopez  
Grullo High School Art Department*



## REPRESENTATIVE TODD HUNTER

*District 32*



*The* District 32 ornament highlights recreational fishing along the Texas coast, which contributes more than \$2 billion annually to our state's economy. On another level, as stated by the artist, "some men go fishing all their lives without knowing it's not just the fish they are after."

*Artists: Dinah Bowman and Mike Catlin*



# REPRESENTATIVE SCOTT TURNER

*District 33*





## REPRESENTATIVE ABEL HERRERO

*District 34*



*L*ocated on the Texas gulf coast between Corpus Christi and Brownsville, District 34 is renowned for its beautiful beaches. This ornament depicts Santa and his elves enjoying the surf and sand. The artist would like to wish everyone “Happy Holidays from District 34!”

*Artist: Alex Tamez  
Tuloso-Midway High School*



## REPRESENTATIVE OSCAR LONGORIA

*District 35*



*The* vividly painted ornament for District 35 signifies the region's rich Mexican-American heritage. Our Lady of Guadalupe tops an ornament that also celebrates the district's award-winning high school Mariachi bands, the beloved game of loteria and the vibrant rare and migratory birds that draw birders from all over the world.

*Artist: Thelma Lugo*





## REPRESENTATIVE SERGIO MUÑOZ, JR.

*District 36*



*T*itled “Beginnings,” this ornament celebrates the courage and faith it takes to found a city. Depicted is La Lomita Mission Chapel, a little chapel on a hill that during the 1800s was a meeting ground where traveling priests celebrated letters, told stories, and discussed their service to the people living along the Rio Grande. The chapel eventually lent its name to the town of Mission, founded by John J. Conway. The ornament—which also celebrates the iconic Lone Star flag—reminds us that all journeys begin with a single step.

*Artist: Luis D. Contreras*



## REPRESENTATIVE RENÉ OLIVEIRA

*District 37*



*This ornament depicts Oliveira Middle School, located in District 37, surrounded by well-known festive symbols of the holiday season and the happiness it brings.*

*Artist: Rosalinda Castillo  
Oliveira Middle School*



## REPRESENTATIVE ARMANDO MARTINEZ

*District 39*



*The* District 39 ornament features spots common to jaguars and ocelots. Ocelots, a small, endangered species of wild cat, have been sighted at Santa Ana National Wildlife Refuge, one of a dozen wildlife parks and sanctuaries in the district. The jaguar is the mascot of South Texas College Mid-Valley Campus, which provides District 39 with access to a world-class higher education.

*Artist: Rachael Freyman-Brown,  
South Texas College Mid-Valley Campus*



## REPRESENTATIVE R.D. "BOBBY" GUERRA

*District 41*



*The* District 41 ornament includes actual footprints from one of the premature babies served by the Easter Seals Early Childhood Intervention Program. Therapy services from the program helped her get the best start in life. Mrs. Leslie Guerra presented the ornament to the children at the Easter Seals Child Development Center to help celebrate the beginning of the holiday season.

*Artist: Dora Cardenas  
Easter Seals Rio Grande Valley*



## REPRESENTATIVE J.M. LOZANO

*District 43*



*Since* Texas hosted its first organized Adopt-A-Beach clean-up in 1986, community volunteers have removed more than 8,500 tons of trash from the state's coastline. The District 43 ornament is made of recycled trash collected from the district's beaches, including crushed CDs, pull tabs and bottle caps.

*Artist: Dinah Bowman*



## REPRESENTATIVE JOHN KUEMPEL

*District 44*



*The* ornament for District 44 features the logo for the Schertz Chamber of Commerce, of which Representative John Kuempel is a member. The chamber extends throughout the district and, like the representative, works every day to build a better tomorrow in the community.

*Artist: Whitney Weidner  
Schertz Chamber/Schertz Area Artz Council*



## REPRESENTATIVE JASON ISAAC

*District 45*



*The* artist for the District 45 ornament chose a modest, yet bright and shining design to express the characteristics of the area.

Elements specific to the district include the representative's name, the Hays County seal, and the Texas State Flag, all with a Christmas theme.

*Artist: Tillman Martinez  
Arts from the Heart*



## REPRESENTATIVE PAUL WORKMAN

*District 47*



*D*istrict 47 includes most of the Lake Travis area. This ornament demonstrates that even though the lake has been low for the past two years, the beauty it brings to the region remains.

*Artist: Judy Wisdom*





# REPRESENTATIVE DONNA HOWARD

*District 48*



*The* District 48 ornament honors Zilker Park and the Lady Bird Lake Hike and Bike Trail. Texans and out-of-state visitors alike flock to the park for dozens of special events each year, including the nation's longest-running kite festival. Others come simply to exercise and enjoy the area's natural beauty. The ornament is filled with peace cranes to celebrate the spirit of the holiday season.

*Artist: Susan Bushart*



# REPRESENTATIVE ELLIOTT NAISHTAT

*District 49*



*D*istrict 49 includes the Texas Capitol in Austin. Before Austin was finally chosen as the capital city in 1839, six other Texas cities also held the title of state capital: Washington-on-the-Brazos, Harrisburg, Galveston, Velasco, Columbia and Houston. Each is noted with a star on this globe, while Austin is represented by the heart hanging outside the ornament.

*Artist: June Dale*



# REPRESENTATIVE EDDIE RODRIGUEZ

*District 51*



*The* colors used in the decoration of the District 51 ornament symbolize the vibrant, multicultural Dove Springs community.

The glitter and sequins evoke the promise and hope of this neighborhood's young leaders.

*Artist: Roberto "Bobby" Perez  
City of Austin Youth Advisory Committee of Dove Springs*



## REPRESENTATIVE LARRY GONZALES

*District 52*



*The* District 52 ornament depicts the table-shaped stone located in the middle of Brushy Creek. The stone once marked an important low-water wagon crossing and acted as a guide for Native Americans and early settlers alike. The city of Round Rock, also in District 52, was named after the stone in 1854.

*Artist: Kristen Posey*



## REPRESENTATIVE HARVEY HILDERBRAN

*District 53*



*This* ornament honors the City of Bandera in District 53. The images of the cowboy and horse pay homage to the Hill Country community that calls itself “The Cowboy Capital of the World.”

*Artist: Donya Young-Beene*



## REPRESENTATIVE JIMMIE DON AYCOCK

*District 54*



*The* District 54 ornament used 3D media to create a snapshot of a winter scene. Although the district does not see much snow, the snowflakes depicted serve as a reminder of the uniqueness of all the district's residents, as well as of all Texans.

*Artist: Melissa Paxton*



## REPRESENTATIVE RALPH SHEFFIELD

*District 55*



*This* ornament honors the University of Mary Hardin-Baylor, located in District 55. UMHB is one of Texas's oldest colleges and is the provider of a high-quality Christian education.

*Artist: Ted Barnes  
Dean, College of Visual & Performing Arts  
University of Mary Hardin-Baylor*



# REPRESENTATIVE CHARLES “DOC” ANDERSON

*District 56*



*The* District 56 ornament honors not just the region, but some things that make the entire state of Texas great.

These highlights include the University of Texas and Texas A&M University; the official state flower, the bluebonnet; the State Capitol because this is the place where Texans’ voices are heard; and, most importantly, the state itself.

*Artists: Vanessa Gayle (12 Years) and Seraphina Gayle (14 years)*





## REPRESENTATIVE TRENT ASHBY

*District 57*



*F*rom Marquez to San Augustine, land, agriculture, and wildlife shape the culture and sense of place in District 57. With its miniature pine tree, cows, horses, chickens and deer, this ornament celebrates the significant role that these elements play in the residents' daily lives.

*Artists: Corinne Rudis, Brittany Tiemann and Denise Davis  
Lufkin High School Art Department*



## REPRESENTATIVE J.D. SHEFFIELD

*District 59*



*This* ornament contains an acrylic image to represent each of the eight counties in District 59: Erath, Comanche, McCulloch, Mills, Hamilton, Coryell, San Saba and Somervell.

*Artist: Ashley Sypert  
Gatesville High School*



## REPRESENTATIVE JIM KEFFER

*District 60*



*T*his ornament pays tribute to Old Rip, a horned toad that brought national attention to District 60 in 1928. As the story goes, Old Rip was entombed in the cornerstone of the Eastland Courthouse in 1897. When the courthouse was demolished 31 years later, he was found still living within the stone. Old Rip toured the U.S. for the next 11 months until his death, at which time he was laid to rest in a velvet-lined casket in the lobby of the new courthouse. To this day, his legend remains, most notably as the inspiration for “Michigan J. Frog,” the mascot for the WB television network.

*Artist: Carolyn White*



## REPRESENTATIVE PHIL KING

*District 61*



*T*his ornament is adorned with peach blossoms and pecans, two important assets to the rural landscape of District 61. Native pecan trees and the Texas state tree follow the West Fork of the Trinity River as it winds through Wise County. Bridgeport boasts a city park full of native pecan trees that provide shade in the summer and a bountiful crop of the nutritious nuts in the fall. Weatherford, the county seat of Parker County, will host its 30th-annual Peach Festival in 2014, when visitors will find an abundance of the tasty fruit straight from the tree.

*Artist: Melanie Singleton*



## REPRESENTATIVE LARRY PHILLIPS

*District 62*



*This* ornament represents the three counties of District 62 —Grayson, Fannin and Delta—and their representative, the Honorable Larry Phillips. Painted in the manner of a woven tapestry, the ornament shows how many individually thin threads come together to create a strong cloth. In the same way, the diverse people and cultures of this North Texas district result in a rich community.

*Artist: Beth Hubbert*



## REPRESENTATIVE TAN PARKER

*District 63*



*D*istrict 63 is a rural and suburban community atop the Blackland Prairie, known for its native plants and wildflowers.

This ornament represents the beauty of this land the settlers once called the “Long Prairie.” Filling with big and little bluestem and azure sage, the ornament’s exterior has soft loam soil from the region.

*Artist: Madison Rice  
Flower Mound High School*



## REPRESENTATIVE MYRA CROWNOVER

*District 64*



*The* theme for District 64's ornament is "We All Shine On." Students from R. Crownover Middle School chose a variety of bright sequins and rhinestones to convey the theme on the outside, and enclosed the names of all the school's "shining stars" inside.

*Artist: R. Crownover Middle School Art*



## REPRESENTATIVE RON SIMMONS

*District 65*



*This* ornament celebrates the 100th anniversary of the City of Carrollton and the 50th anniversaries of both Lewisville and Highland Village. All three communities are located in District 65.

*Artist: Toni Perdue*





## REPRESENTATIVE VAN TAYLOR

*District 66*



*The* District 66 ornament illustrates  
the most precious gift of all: the birth of Jesus Christ.

*Artist: Michelle Rusk*



## REPRESENTATIVE JEFF LEACH

*District 67*



*A* hot air balloon hangs within the ornament in honor of the annual hot air balloon festival in Plano, Texas, located in District 67.

The bottom is covered in snow to reflect the artist's hopes for a white Christmas.

*Artist: Alexandra Buck*



## REPRESENTATIVE DREW SPRINGER

*District 68*



*This* ornament is painted to resemble cowhide, evoking the longhorn cattle that once traveled the Chisolm Trail through District 68. A church reflects the strong family values found in Muenster, Texas, home of Representative Drew Springer and his family. A boot is also included to represent the legendary Nocona Boot Factory, whose star-studded clientele has included Lyndon B. Johnson and Ronald Reagan.

*Artist: Judith McMillion-Smith  
Gainesville Area Visual Arts*



# REPRESENTATIVE JAMES FRANK

*District 69*



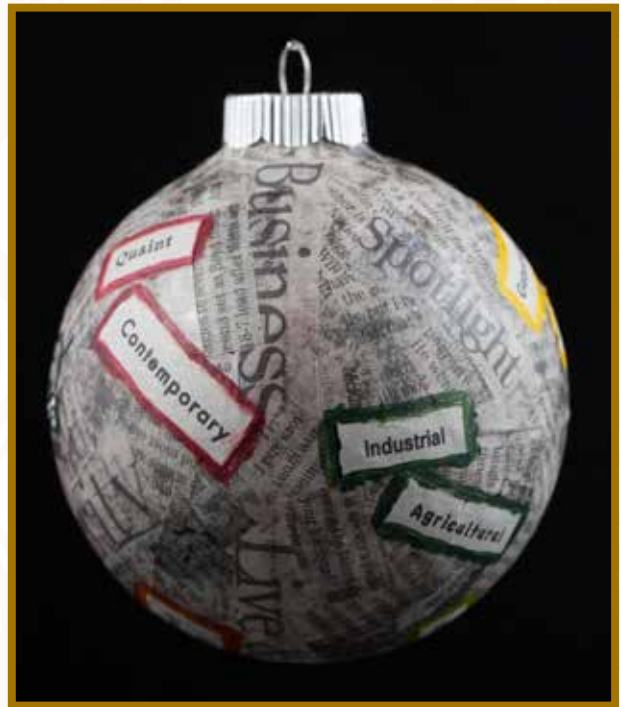
Even in the midst of an unfortunate drought, District 69's appreciation and stewardship of its local wildlife has not diminished. The bright colors of the ornament stand out, much like the region.

*Artist: Claire Eby  
National Art Honor Society*



## REPRESENTATIVE SCOTT SANFORD

*District 70*



*This* ornament highlights the many contrasts of the District 70 community. Over a background of newsprint from the McKinney Courier Gazette, the artist chose words that describe the district's contradictions: country and urban, generations and newcomers, industrial and agricultural, rolling hills and flat country and contemporary and quaint style.

*Artist: Pam Holzkecht*



## REPRESENTATIVE SUSAN KING

*District 71*



*This* ornament is the fifth in a series entitled “The Jewels of District 71.” More than any other resource, the people who live in the district are its true jewels. Represented by Swarovski crystals, each member of the district contributes to the indomitable West Texas spirit in different ways. The true blessing of Christmas is symbolized by three panels depicting the star that led the wise men in their search for the Christ child, the humble manger that cradled the Baby Jesus, and the cross that would someday hold our Savior, the son of God who began so tenderly as a tiny infant.

*Artist: The Honorable Susan King*



## REPRESENTATIVE DREW DARBY

*District 72*



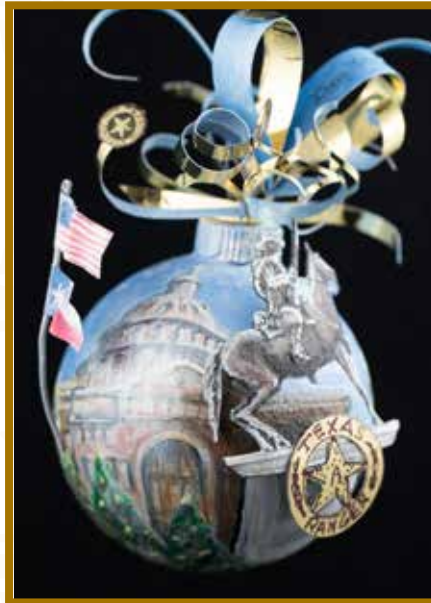
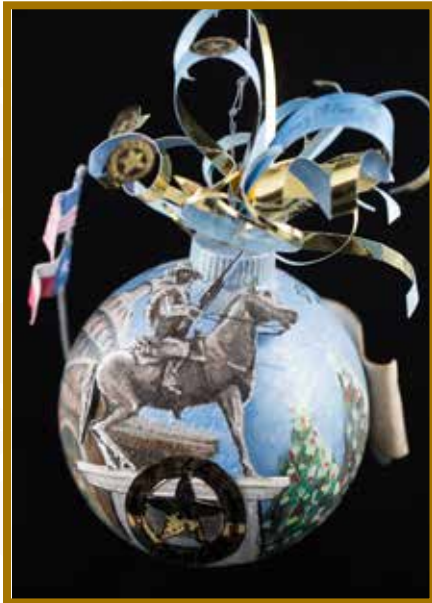
*This* ornament depicts an original character called the StarKeeper—based on the Native American shaman tradition—as he goes through his morning routine of gathering up the moon and hiding the stars so Coyote and Raven won't play with them. He then drums up the sun and initiates the day for all creatures. Each evening, the StarKeeper places the stars back in the sky. On a full moon, he will gather his friends and celebrate as he has fewer stars to place that night.

*Artist: Roger Allen*



## REPRESENTATIVE DOUG MILLER

*District 73*



*The* District 73 ornament recognizes the service of the Texas Rangers and honors the memories of those who are no longer with us. Featured on the ornament is a replica of the Texas Rangers monument on the Texas Capitol grounds, as well as a tribute to Johann Conrad Mund, a Gillespie County ranger during the late 1800s.

*Artist: Jane Felts Mauldin*





# REPRESENTATIVE PONCHO NEVÁREZ

*District 74*





## REPRESENTATIVE NAOMI GONZALEZ

*District 76*



Although Lincoln Park School wasn't officially established in District 76 until 1915, the school's history reaches as far back as 1868, when it opened as the one-room Concordia School in the officer's quarters of Camp Concordia. The same year, Fort Bliss was moved to the area, where it operated as a military base until 1876. Once a flourishing community known as the Concordia District, the area now sits under the intersection of Interstate 10 and U.S. Highway 54. Lincoln Center is now the only public building left standing from the old Concordia School District.

*Artist: Pedro Rios Martinez*



# REPRESENTATIVE MARISA MÁRQUEZ

*District 77*



*The* star on the Franklin Mountains overlooks the entire city of El Paso, including District 77, shining as the sunset gives the city a light show in yellow, orange, pink, red and purple hues. The sand represents White Sands National Park, located just north of the city.

*Artist: Maleny Lopez*



## REPRESENTATIVE JOE MOODY

*District 78*



Representative Moody was honored to have Creative Kids participant Danashiya Pritchard, a seventh-grader at Parkland Middle School, as the artist for the District 78 ornament. On November 22nd, in a ceremony at the White House, First Lady Michelle Obama presented Creative Kids with the President's Committee on the Arts and the Humanities 2013 Youth Program Award. Pritchard was chosen to give the opening speech, and she talked about how Project Arts-In-Motion (AIM) has helped her cope with sickle cell anemia. In regard to the inspiration for the ornament's design, Pritchard stated, "District 78 is important to not only those in El Paso, but to those all around Texas. Our beautiful desert is the epitome of amazing, and to me, it's significant because it's my home!"

*Artist: Danashiya Pritchard*



# REPRESENTATIVE TRACY KING

*District 80*





## REPRESENTATIVE TRYON LEWIS

*District 81*



*Kermit*, Texas, located in District 81, is known for its sand dunes and oil rigs. The ornament's color scheme celebrates a region rich in oil, or "black gold." Drilling equipment and a yellow jacket, the mascot for Kermit High School, are also depicted, while the Star of Bethlehem shines above it all.

*Artist: Tonia Tidwell  
Kermit High School*



# REPRESENTATIVE TOM CRADDICK

*District 82*



*Artist: Katie Heck*



## REPRESENTATIVE CHARLES PERRY

*District 83*



*In* District 83, God and his son Jesus Christ are celebrated year round. This ornament, which features a sunflower crop, is reflective of the change of seasons and represents the Son who creates all things from the inside out.

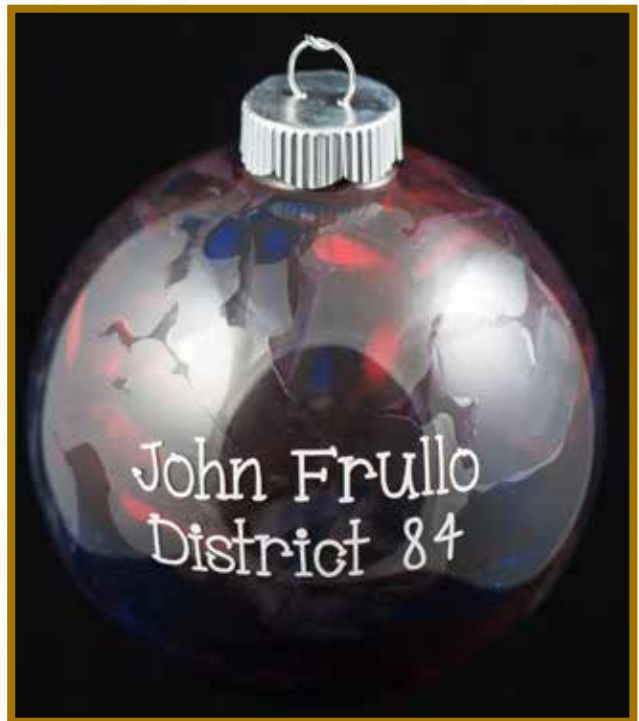
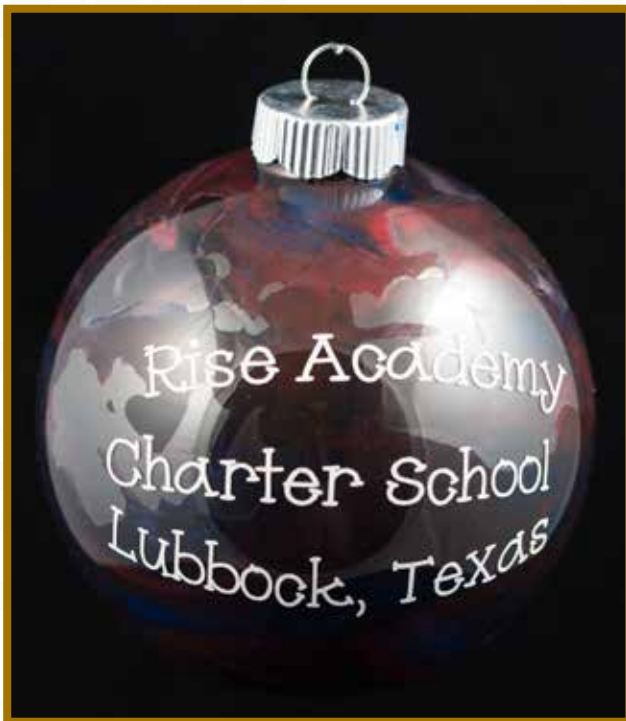
*Artist: Val Cochran*





## REPRESENTATIVE JOHN FRULLO

*District 84*



*F*or this ornament, the artists focused on the colors red, white and blue to represent our country's pride, honor, and freedom. The white was used on the lettering outside the ornament, while red and blue crayons were

*Artists: Mrs. Shipley's First Grade Class  
Rise Academy Public Charter School*



# REPRESENTATIVE PHIL STEPHENSON

*District 85*



*This* ornament depicts the historic courthouses of Wharton, Jackson and Fort Bend Counties, which comprise District 85. The ornament's interior is stuffed with cotton, one of many crops common in the area.

*Artist: Zina Carter  
Wharton County Junior College*



## REPRESENTATIVE FOUR PRICE

*District 87*



*The* ornament from District 87 depicts the Santa Fe Railroad's lasting influence on community development. The depot in the painting is located in Panhandle, Texas. It was built in 1925 and is used today as the town's city hall. The steam engine, "Madame Queen" No. 5000, was built in 1930 and can still be seen at the Railroad Artifact Preservation Society in Amarillo.

*Artist: Lori Jayne Lermon*



## REPRESENTATIVE KEN KING

*District 88*



*This ornament conveys the diversity of the residents' livelihoods in District 88, from family ranching and cattle production to the energy industry and cotton farming.*

*Artist: Connie Rankin*



# REPRESENTATIVE JODIE LAUBENBERG

*District 89*



*At* the edge of the City of Wylie, Texas, in District 89, is a private school called Wylie Preparatory Academy. Wylie Prep is a university-model school that celebrates the true meaning of Christmas year-round.

The ornament's artist is a teacher at the academy who sought the input of all art students for the design. Each student placed his or her name inside the ornament.

*Artist: LaTonya McCormick  
Wylie Preparatory Academy*



## REPRESENTATIVE LON BURNAM

*District 90*



*The ornament for District 90 honors the beauty and diversity of our state. Two angels are painted on the ornament in colorful Mexican-inspired designs to represent the power of the love that the district's residents feel for their children.*

*Artists: Jo Dufo and Students  
Metro Opportunity High School*



## REPRESENTATIVE STEPHANIE KLICK

*District 91*



*T*arrant County was established in 1849, and the town of Birdville soon became its first county seat. The District 91 ornament honors this community, as well as its churches, considered “crown jewels” of the district for their rich history. One such church, Birdville Baptist, is honored on the ornament for recently celebrating its 160th year.

*Artist: Lori Lutz*



# REPRESENTATIVE JONATHAN STICKLAND

*District 92*



*The* residents of District 92 take great pride in the Lone Star State. Located between Fort Worth and Dallas, the Hurst-Euless-Bedford community is popular for family friendly suburban living.

*Artists: Jenny Stickland and Lisa McIlvain*





## REPRESENTATIVE DIANE PATRICK

*District 94*



*A*rlington, located in District 94, bills itself as the entertainment capital of Texas since it is home to landmarks such as the AT&T (Cowboys) Stadium, the Ballpark (Ranger) Stadium, Hurricane Harbor, and Six Flags Over Texas. This ornament shows Six Flags Over Texas on a starry night.

*Artist: Lindsay Whittenberg  
West Elementary School*



## REPRESENTATIVE CRAIG GOLDMAN

*District 97*



*The* District 97 ornament was designed by two sisters.

The concept for the design is that time is a gift.

“We wish to remind people that their time is the most wonderful gift that they can give this season,” said one of the artists.

*Artists: Laura Kilpatrick & Penny Porsch  
The Art Institute of Fort Worth*



REPRESENTATIVE CHARLIE GEREN  
*District 99*



*S*tudents created the District 99 ornament to honor Castleberry Independent School District and the snowfall characteristic of the season.

*Artists: Students  
Castleberry High School*



## REPRESENTATIVE ERIC JOHNSON

*District 100*



*This* ornament carries a message of hope and healing for all the children served by the Dallas Children's Advocacy Center (DCAC). The Center's staff and partners work every day to ensure that abused children receive the gifts of hope and healing all year long.

*Artists: Erin Banister, Mindy Jackson and DCAC client  
Dallas Children's Advocacy Center*



# REPRESENTATIVE STEFANI CARTER

*District 102*



*O*n any given Friday night in Richardson ISD, you can find hundreds of families at a football game supporting one of the four great schools represented on this ornament. These teams keep the community close and boost pride.

*Artist: Anna Fields  
Richardson High School Visual Arts Magnet*



## REPRESENTATIVE RAFAEL ANCHIA

*District 103*



*The* District 103 ornament was created by a student artist to celebrate both his school spirit and the holiday season.

*Artist: Daniel Flores  
Irving High School*



## REPRESENTATIVE LINDA HARPER-BROWN

*District 105*



*The* District 105 ornament honors the historic railroad industry of the City of Grand Prairie. The ornament also features Grand Prairie's iconic water tower and the beloved Uptown Theatre.

*Artists: Florencia Padilla (12th Grade) and Jacqueline Sheeley (7th Grade)  
Grand Prairie Fine Arts Academy*



## REPRESENTATIVE KENNETH SHEETS

*District 107*



*The Mesquite Rodeo is one of the biggest events of the year in Mesquite, Texas, of District 107. The artwork depicts a steer with the Texas flag. The words "Mesquite, Texas" are branded on the side and wrapped in twine.*

*Artists: Bryanna Sharkey  
Poteet High School*





## REPRESENTATIVE HELEN GIDDINGS

*District 109*



*The* young artist for the District 109 ornament decided to honor her school, Thomas L. Marsalis Elementary School. Using clay and other 3-D media, she created a replica of the school's mascot, Marvelous Mustang.

*Artist: Ruth Briones (5th Grade)  
Thomas L. Marsalis Elementary School*



## REPRESENTATIVE TONI ROSE

*District 110*



*The stars and sparkle on this ornament represent the legacy of Thelma Elizabeth Page Richardson, a civil rights activist and a hero to Dallas teachers. Thelma Richardson Elementary was dedicated in her honor in District 110 this year. The blue and silver colors celebrate the Dallas Cowboys.*

*Artists: Joshua Coats and 5th Grade Art Class  
Thelma Richardson Elementary School*



## REPRESENTATIVE ANGIE CHEN BUTTON

*District 112*



*The* button inside this ornament designates the location of District 112 on the map. Along with the Texas Pledge of Allegiance, the ornament also contains the names of the cities that make up the district: Richardson, Garland, Rowlett, Sachse and Dallas.

*Artist: Jack Benavides  
University of Texas at Dallas*



## REPRESENTATIVE CINDY BURKETT

*District 113*



Even Santa needs a vacation every once in a while, so he packed up his fishing gear and headed for Rowlett, Texas, in District 133, to enjoy fishing in beautiful Lake Ray Hubbard. As stated by the artist, “We love our lake community!”

*Artist: Terri Blankinship  
Artists 'Round Texas*



# REPRESENTATIVE JASON VILLALBA

*District 114*



*A* young artist created the District 114 ornament to honor the Texas State Fair and Big Tex, the iconic statue that many Texans mourned when it burned in 2012 and celebrated when it was rebuilt in 2013. Depicted on the ornament are images of the fair during the day and night, with symbols of the Tower Building and the Texas Star placed within.

*Artist: Feranda Ibarra (4th Grade)  
Harry C. Withers Elementary School*



## REPRESENTATIVE BENNETT RATLIFF

*District 115*



*The teenage artist who painted the District 115 ornament wanted to share her childhood memories of Christmas. The hand-painted ornament features a young girl decorating a tree while a little boy delivers a wagon of presents to go under it.*

*Artist: Jinny Rim  
Coppell High School*



## REPRESENTATIVE PHILIP CORTEZ

*District 117*



*The* District 117 ornament is a 3-D collage of what makes the Christmas season special to the students of Southwest High School, including Santa Claus, a festively decorated tree and their school's football field. Representative Philip Cortez is also honored on the ornament.

*Artists: The Students of Southwest High School*



# REPRESENTATIVE JOE FARIAS

*District 118*



*This* ornament contains the name of every man and woman who served in the military from Bergs' Mill, Texas, in District 118. Berg's Mill is near San Juan Capistrano Mission, eight miles south of downtown San Antonio in southern Bexar County. More than 200 names are placed inside the ornament to honor veterans and their families for the sacrifices they made for our nation.

*Artist: Melissa Huron  
District Director, Representative Joe Farias*





## REPRESENTATIVE ROLAND GUTIERREZ

*District 119*



*The* ornament for District 119 celebrates Fiesta, an annual tradition in San Antonio. In 1891, a group of citizens decided to honor the heroes of the Alamo and the Battle of San Jacinto with a Battle of Flowers. The annual Battle of Flowers parade is the only one in the country to be planned and executed completely by women.

Fiesta also features a carnival, balls, coronations, dancing and many other events spread across a 10-day celebration.

*Artist: Sue Flores-Minick*



# REPRESENTATIVE RUTH JONES MCCLENDON

*District 120*



*O*ne side of this ornament features the Sam Houston High School Hurricanes logo and the school initials surrounded by poinsettias. The opposite side is covered in snowflakes to convey the students' hopes for a white Christmas in District 120 this year.

*Artists: Maricella Boyle and Diamondtina Benavidez  
Sam Houston High School*



## SPEAKER JOE STRAUS

*District 121*



Created by Girl Scout Troop 243, this ornament incorporates the Girl Scouts' symbol, the trefoil. The three leaves of the trefoil represent the three parts of the Girl Scout Promise: "To serve God and my country, to help people at all times, and to live by the Girl Scout Law." As stated by the troop leader, "We live daily the Girl Scout mission: building girls of courage, confidence, and character who make the world a better place."

*Artists: Girl Scout Troop 243*



## REPRESENTATIVE LYLE LARSON

*District 122*



*This* ornament depicts the Nativity as seen through the eyes of a five-year old and is meant to celebrate the children of District 122.

*Artist: Katherine Scott Dickson (age 5)*



# REPRESENTATIVE JUSTIN RODRIGUEZ

*District 125*



*Since* 1852, tens of thousands of students have graduated from St. Mary's University, a San Antonio landmark located in District 125. This multicolored globe recognizes the diverse cultures represented within the city, as well as the college students who come from around the world.

*Artist: Brother Cletus G. Behlmann, S.M.  
St. Mary's University Art Center*



## REPRESENTATIVE PATRICIA HARLESS

*District 126*



*The* ornament for District 126 celebrates the Cypress Creek Greenway project. The exterior painting shows the urban and forested landscape surrounding the creek, with bike trails and a bald eagle native to the area. A copper wire encircles the bulb, spelling out “Cypress Creek Greenway,” and molded leaves inscribed with “District 126” create a chandelier effect.

*Artists: Sarah Garner and Lauren Hernandez  
Cypress Creek High School*



## REPRESENTATIVE DAN HUBERTY

*District 127*



*This* young artist decorated the District 127 ornament in red, white and blue to show her pride for both Texas and the United States. The 3-D western-inspired elements affixed to the ornament honor the Lone Star State's western heritage.

*Artist: Carsen Meredith Hartung (Age 11)*



## REPRESENTATIVE WAYNE SMITH

*District 128*



*O*n one side of this ornament is a train representing the many railroads in District 128. The other side highlights the Cody Stephens “Go Big or Go Home” Foundation, established in memory of Cody Stephens, a football player and senior at Crosby High School who died of cardiac arrest in 2012. The foundation helps schools implement screening programs to identify youth at risk for heart problems.

*Artist: Jamey Swisher  
Crosby High School*





## REPRESENTATIVE ALLEN FLETCHER

*District 130*



*This* ornament's artist was inspired by the 2012 Texas Capitol Ornament, which showcased the ornamental fence that surrounds the Capitol grounds. It is wrapped in gold wire accented with gold stars and a cross. All of these components combine to represent District 130's faith and state pride.

*Artist: Sharon Slover*



## REPRESENTATIVE ALMA A. ALLEN

*District 131*



*The* theme for the District 131 ornament is “the sky’s the limit.”

The artist chose this theme because he finds hope in the sense of possibility that comes with children. “We often toil with how we’ll attain every goal,” he wrote. “The truth, however, is that goal realization rests in the palms of the children.”

*Artist: Jon-Michael Hensley*



## REPRESENTATIVE BILL CALLEGARI

*District 132*



*The* city of Katy, located in District 132, was named for the M-K-T Railroad that still runs through it, honored here with a train.

The ribbon and football symbolize the Katy Tiger pride that runs deep in the hearts of the district's residents. Finally, red and white grains of rice represent both the hometown colors and the rice fields that drew Katy's founding families to the area.

*Artist: Lindsey Fojtik  
Katy Magazine*



# REPRESENTATIVE JIM MURPHY

*District 133*



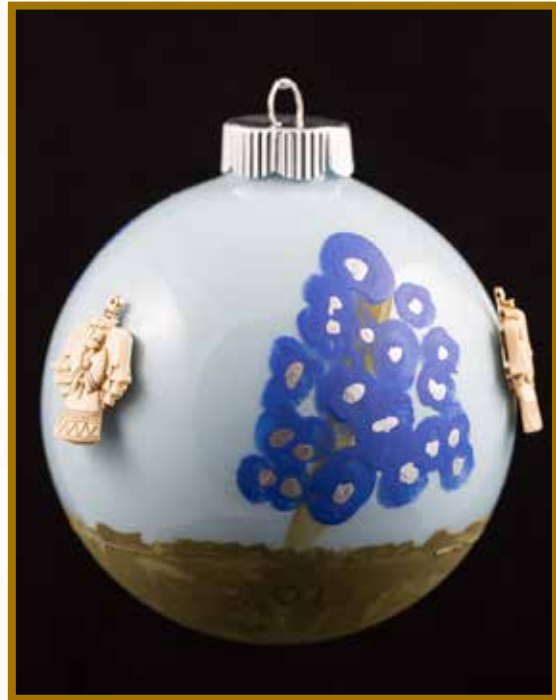
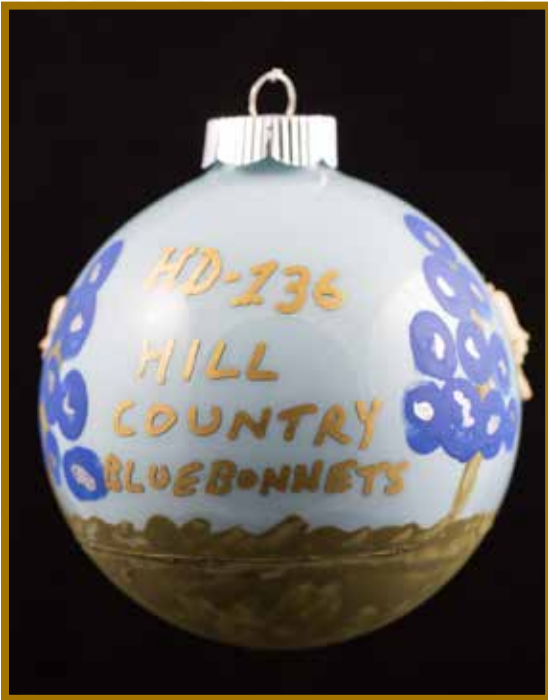
*The* theme for District 133's second-annual ornament decorating contest was "Fun and Games on Buffalo Bayou." Community members enjoy canoe and duck races, as well as walking the local trails alongside plentiful wildlife. Eagle's Trace, the name painted on the canoe, is a retirement community along the bayou in the district.

*Artist: Betty Schell  
Eagle's Trace Retirement Community*



## REPRESENTATIVE TONY DALE

*District 136*



*The* ornament depicts bluebonnets in the Texas Hill Country. Every spring, District 136 in southwestern Williamson County is home to an abundance of the purple and blue wildflowers.

The petals of the flower were created by the fingerprints of the ornament's young artists.

*Artists: Maggie (13) and Isabella (9) Dale  
(daughters of Representative Dale)*



## REPRESENTATIVE GENE WU

*District 137*



*D*istrict 137's ornament celebrates the diversity and multiculturalism of the district's constituents. Students from Gabriela Mistral Center for Early Childhood are featured circling the ornament, while the colorful strips inside contain their parents' wishes and dreams for them. Families from all over the world are grateful for the opportunities available to them in the district as they look ahead to a bright future for their children.

*Artist: Lori Espinoza*

*Mistral Center for Early Childhood/Rice OWL Lab Instructor*



## REPRESENTATIVE DWAYNE BOHAC

*District 138*



*The* District 138 ornament was a collaboration among the students at Northbrook High School's Art Department. Bright colors and patterns convey the cheerful and festive nature of the season.

*Artist: Northbrook High School Art Department*



## REPRESENTATIVE JESSICA FARRAR

*District 148*



*This ornament is decorated with liquid etching, glass paint, and wire. The design reflects the 19th Street Shopping District in Houston's historic Heights neighborhood, located in District 148.*

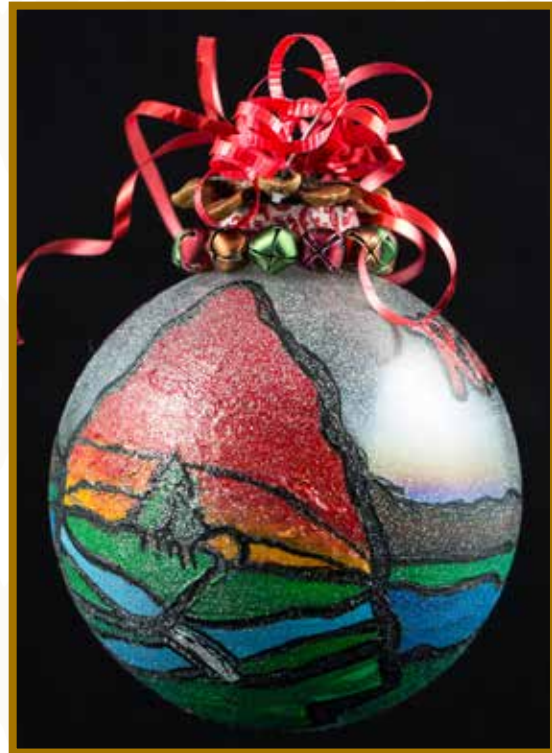
*Artist: Alex Harrah*





## REPRESENTATIVE DEBBIE RIDDLE

*District 150*



*The* ornament for District 150 honors the 2007 dedication of the Timberlane Utility District Cypress Creek Hike & Bike Trail, a 105-acre recreational reserve that is part of the creek's park system.

The birds and trees painted on the ornament pay tribute to the district's rich wildlife habitats.

*Artists: Ashley Murphy and Bryan Hurt  
Spring High School*