



*Tis the Season*

2023



## 2023 House Chamber Christmas Tree

### Affectionately named “Mamie V”

Celebrate the season and the creativity of Texans from across the state.

Members of the Texas House of Representatives were invited to select a constituent to create a Christmas ornament to showcase unique elements of their House Districts. These ornaments now hang proudly on this native Texas tree in celebration of the many facets of our nation’s second largest state, home to over 29 million people. The photo album displayed here provides the opportunity for a closer look at the handcrafted treasures that have been received this year. Ornament albums are assembled by district number. To look for your hometown’s district, please reference the nearby House district map.

\*\*\*

*The Texas House of Representatives is proud to display trees that were provided by the Texas Christmas Tree Growers Association in conjunction with the organization’s president, Tish Woodruff , including this 12-foot Virginia pine, compliments of Marshall and Sharlote Cathey of Elves Farm in Denison. Additional trees, three 7-foot Fraser firs, compliments of TCTGA, are located throughout the Capitol.*







Representative Gary VanDeaver  
DISTRICT 1



Artist: Judy Jones



# Representative Cecil Bell, Jr.

## DISTRICT 3



Artist: Destiny Santos

Magnolia High School

# Representative Keith Bell

## DISTRICT 4



Artist: Isabella Phiffer, 9th Grade Student

Kaufman High School



# Representative Cole Hefner

## DISTRICT 5



Artists: High School Art Teacher, Theresa Phillips, and  
Advanced Art Class students,  
Milo Kulp and Noah Murff

Rains Independent School District

# Representative Matt Schaefer

## DISTRICT 6



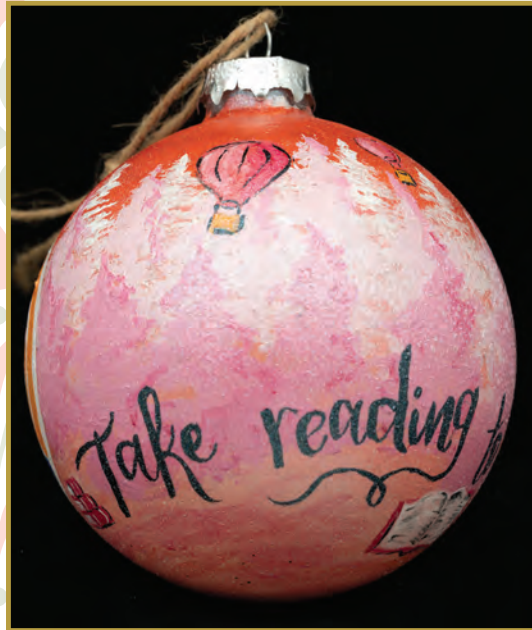
Artist: Jayleann Roth

Tyler Junior College Apache Belles



# Representative Jay Dean

## DISTRICT 7



Artist: Jamie Robinson

The Dolly Parton Imagination Library,  
a program of the Greater Longview United Way

Representative Cody Harris

DISTRICT 8





Representative Trent Ashby

DISTRICT 9



# Representative Kyle Kacal

## DISTRICT 12



Artist: Kendall Kacal



Representative *Angelia Orr*

DISTRICT 13



Artist: Chesley Smith of Waco, Texas

Representative John Raney  
DISTRICT 14



# Representative Steve Toth

## DISTRICT 15



Artist: Nathan Fries

Love Heals Youth 501c3

Through LOVE, we HEAL! Our counseling program will help foster care youth rewrite and repurpose their trials and tribulations so they can find acceptance for the present and find freedom from the past. In time, LOVE will HEAL all wounds



Representative Stan Gerdes

DISTRICT 17



# Representative Ernest Bailes

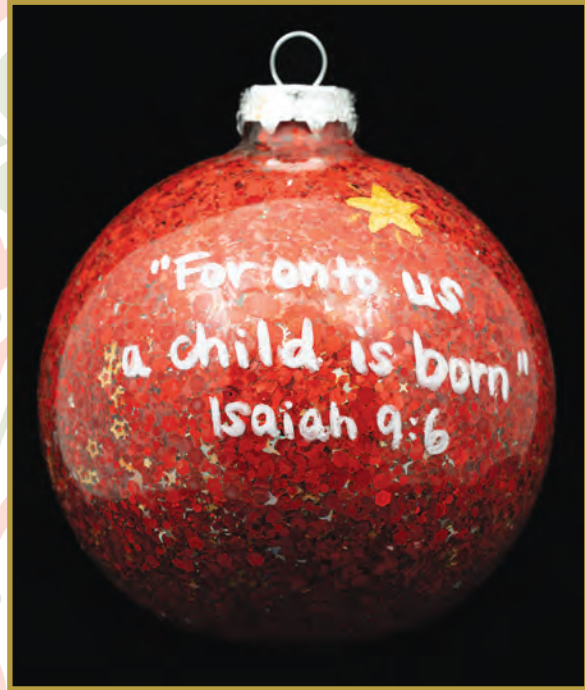
## DISTRICT 18



Artist: Marydith Hebert,  
Student from Coldspring, Texas

# Representative Ellen Troxclair

DISTRICT 19



Artist: Thiele B



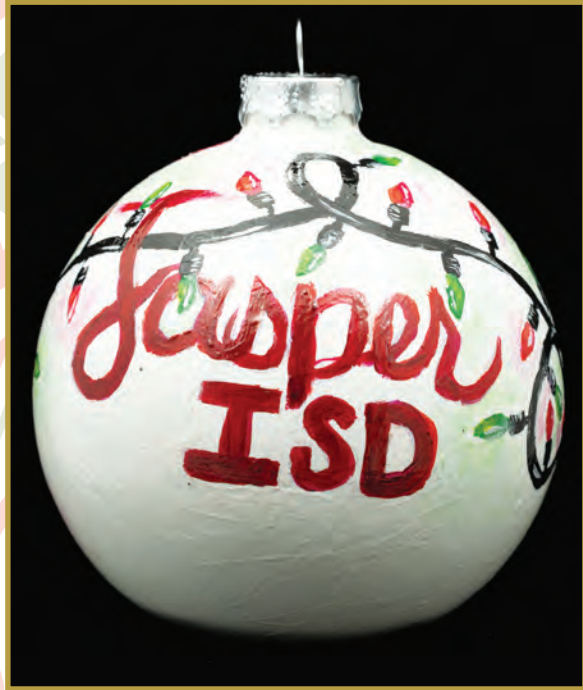
Representative Terry M. Wilson  
DISTRICT 20



LHISD

Speaker Wade Phelan

DISTRICT 21



Artist: Jasper High School Art Department under the direction of  
Art Teacher Mrs. Jennifer Quintavalle

Representative Terri Leo-Wilson

DISTRICT 23





# Representative Greg Bonnen, M.D.

## DISTRICT 24



Artist: Tammy Eckart

Lighthouse Christian Ministries

Ornament represents the District by showcasing the pride in Texas, love of God, the impact of NASA, the non-profits that provide hope, and the incredible generosity of District 24 that demonstrates a community that comes together to support those in times of need!

# Representative Cody Vasut

## DISTRICT 25



Artist: Cynthia Lancaster

Brazosport Art League

The ornament represents important aspects of Brazoria County

# Representative Jacey Jetton

## DISTRICT 26

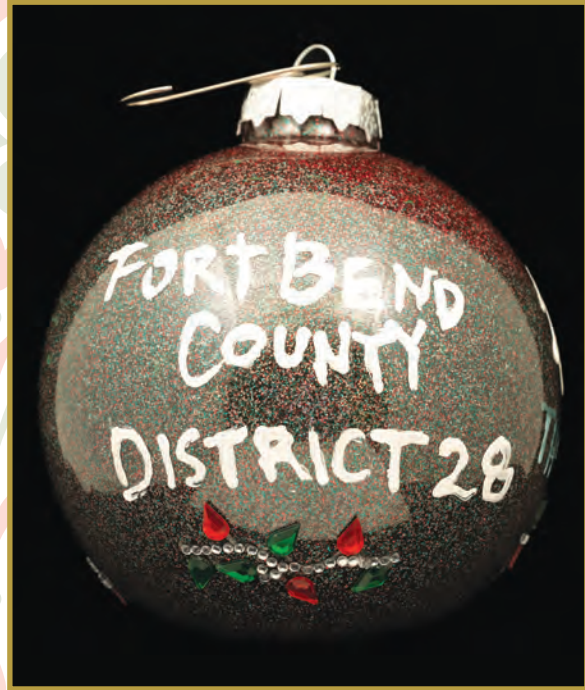


Artists: Student artists Ashley Chung, Claire Huang, Kathy Shen  
under the guidance of teacher Patricia A Kuhn, M. Ed.



# Representative Gary Gates

## DISTRICT 28



Artist: Melissa Gates

### Reining Strength Therapeutic Horsemanship

Reining Strength Therapeutic Horsemanship provides a wonderful community service to Fort Bend County by partnering with horses to help adults and children age 2 and up to realize their individual potential through therapeutic riding and equine assisted learning.

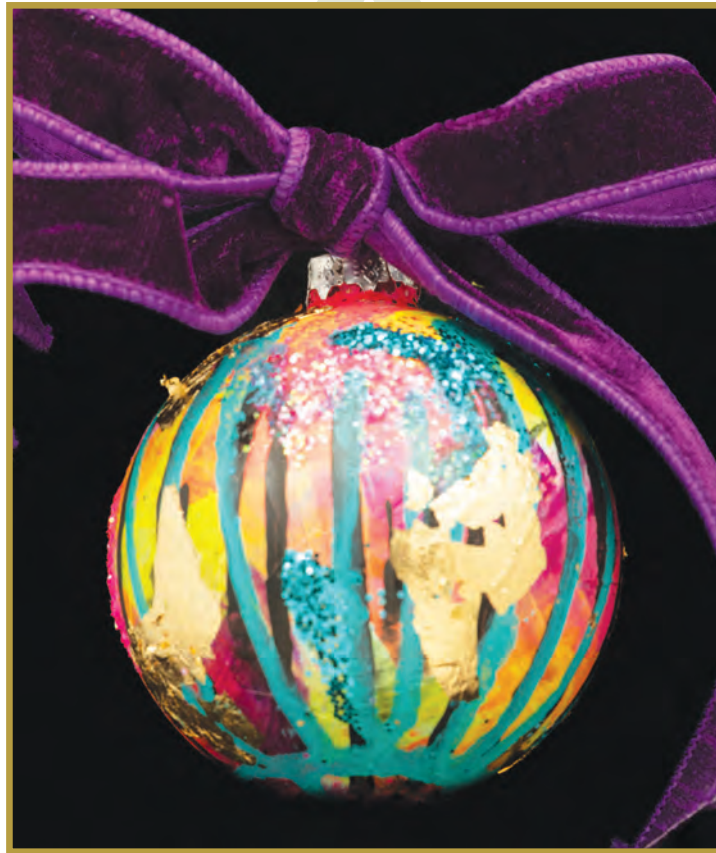
# Representative Ed Thompson

DISTRICT 29



Artist: Emily Biar

Representative Justin Holland  
DISTRICT 33



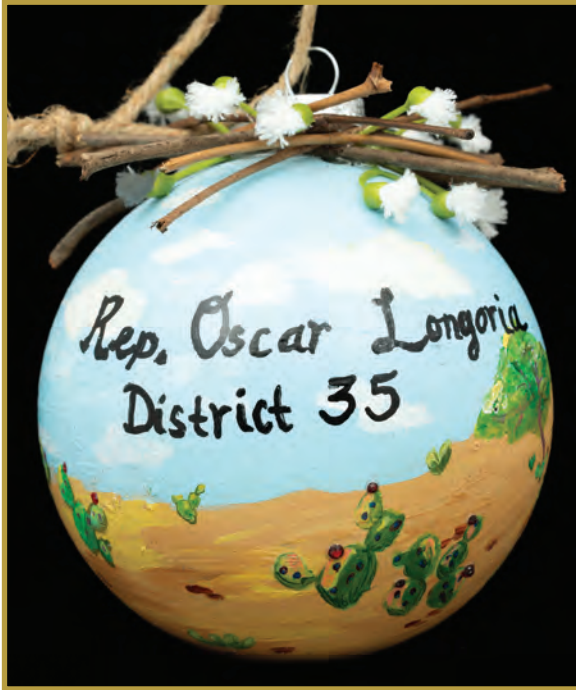
Artist: Amy Lawrence

Amy Joyce Designs



# Representative Oscar Longoria

DISTRICT 35



Representative Janie Lopez  
DISTRICT 37



# Representative Terry Canales

## DISTRICT 40



Artists: Karla Ponce, Celinda Ibarra, Emma Leal, Paulina Garza, Katelyn Galván

Terry Canales Law Firm

The ornament is in the style of a Christmas Posada Piñata.

The design of the pinata is meant to represent the Star of Bethlehem.

Las Posadas are Christmas gatherings celebrated in the United States and many places in Latin America that traditionally take place each night from December 16 through December 24 to commemorate the journey that Joseph and Mary made from Nazareth to Bethlehem in search of a safe refuge where Mary could give birth to the baby Jesus.



Representative R.D. "Bobby" Guerra

DISTRICT 41



Artist: Siria Carrasco

La Leona Studio

# Representative J. M. Lozano

## DISTRICT 43



St. Mary's Academy Charter School in Beeville, Texas  
3-6 graders and 5th and 6th grade GT students

In our design, we decided to represent Beeville. In doing so, we drew the "BT" with a Santa hat to represent the Beeville Trojans. We drew our St. Mary's Academy Charter School eagle with a Santa hat to represent our school. We drew our courthouse that is located in the town of Beeville, and we drew a Bee to represent our Beeville community. We added beads with the words family, joy, and merry to represent how our town comes together as a family and is a joyful and merry place to live.

Representative Erin Zwiener

DISTRICT 45



Artist: Rene Perez



Representative Vikki Goodwin

DISTRICT 47



Artist: Evan Pruet

AP Studio Art and Design at Bowie High School in AISD

Representative Gina Hinojosa  
DISTRICT 49



Artist: Jade Walker

Elisabet Ney Museum

Representative James Talarico

DISTRICT 50





Representative Maria Luisa "Lulu" Flores

DISTRICT 51



Artist: Ana Vazquez

MAS Cultura and Dove Springs Proud

# Representative Caroline Harris

DISTRICT 52

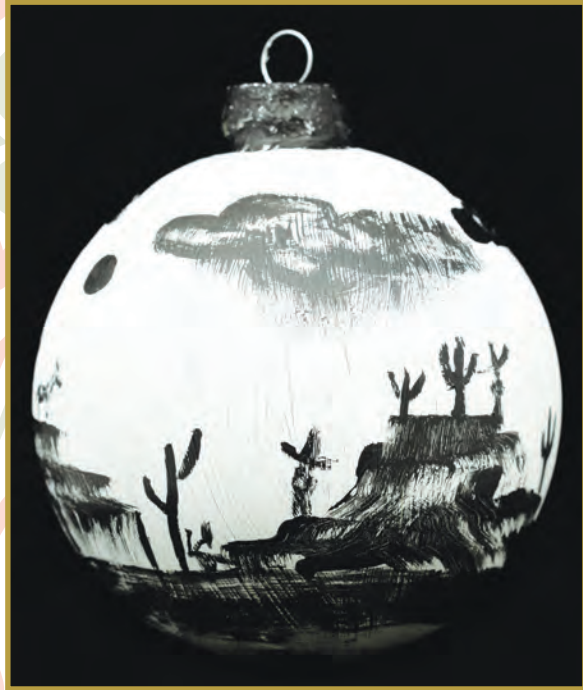
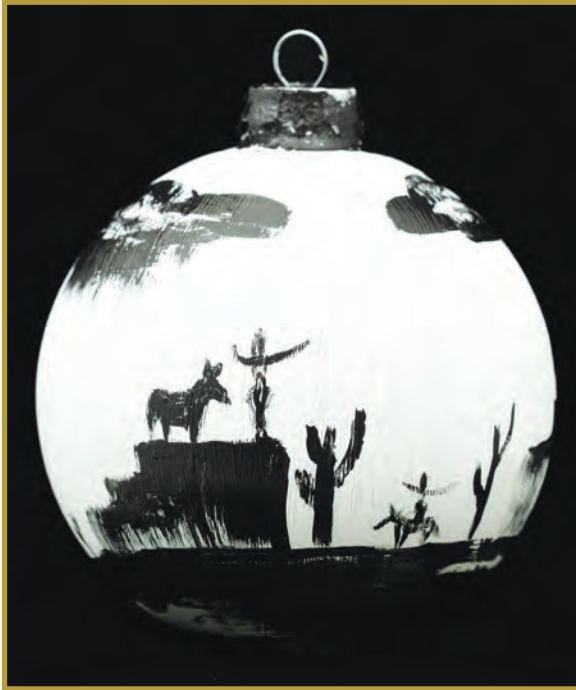


Artist: Jamie Tanner

Simple Sparrow Care Farm

Representative Andrew S. Murr

DISTRICT 53



Artist: Laura Goodson

Laura Goodson Art



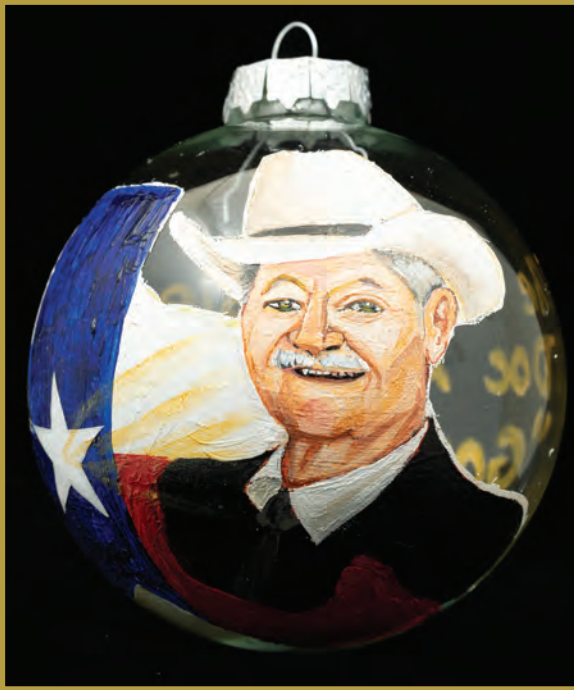
Representative Hugh D. Shine

DISTRICT 55



Representative Charles "Doc" Anderson

DISTRICT 56



God Bless Texas

Representative Glenn Rogers  
DISTRICT 60



Artist: Grace Lazrine

8th Grade Student at Aledo Middle School in the Aledo Independent School District



Representative Frederick Frazier  
DISTRICT 61



Unique by nature

Representative Reggie Smith  
DISTRICT 62



Representative Benjamin Bumgarner

DISTRICT 63





Representative Lynn Stucky  
DISTRICT 64



Artists: Claire, Maggie and Zelda Clark

Wise County Courthouse

# Representative Kronda Thimesch

DISTRICT 65



Artists: First grade students Audri Tompkins and Evelyn Michener

E.P. Rayzor Elementary School

# Representative Matt Shaheen

DISTRICT 66



Artist: Saffee Wang

Prestonwood Christian Academy



# Representative Jeff Leach

DISTRICT 67



Artist: Cooper Chambers, 11th Grade Student

Farmersville High School

Representative David Spiller

DISTRICT 68



Representative James Frank  
DISTRICT 69



Artists: Staff of the Arts Council Wichita Falls



Representative Mihaela Plesa

DISTRICT 70



# Representative Stan Lambert

DISTRICT 71

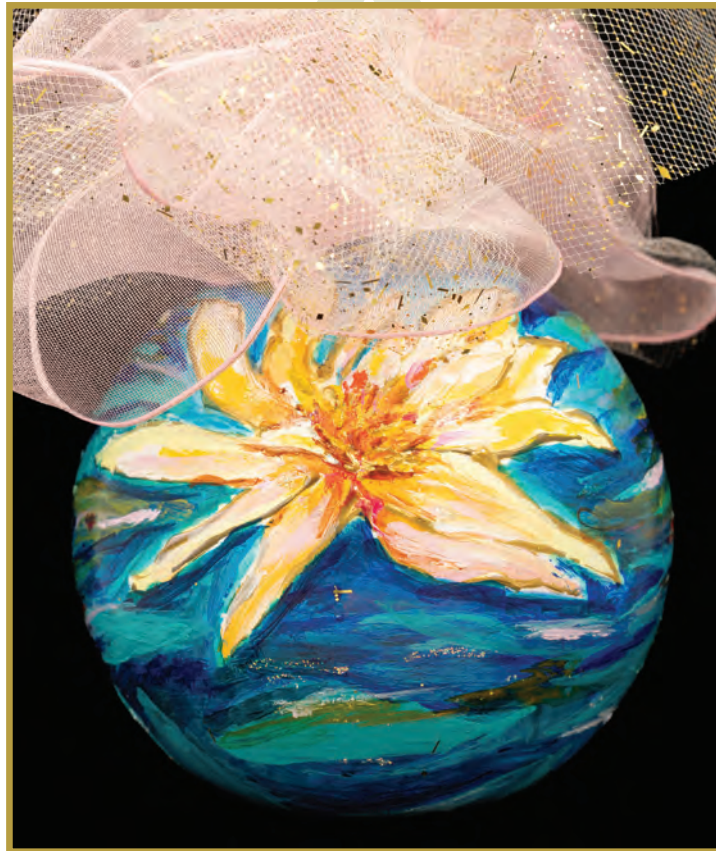


Artist: Kathryn Mitchell, Director of Education

The Grace Museum

Always be a little kinder than necessary

Representative Drew Darby  
DISTRICT 72



Artist: Tonya Rainey



# Representative Carrie Isaac

DISTRICT 73



Artist: Brooklynn Parrott

Wimberley High School

Welcome to Wimberley

# Representative Eddie Morales

DISTRICT 74



Artist: Carlos Auriós

Garfield Elementary

Representative *Mary E. González*  
DISTRICT 75



Artist: Gaspar



Representative Suleman Lalani, M.D.

DISTRICT 76



Artist: Fahim Somani

Representative Evelina "Lina" Ortega  
DISTRICT 77



Artist: Ms. Elizabeth O'Hara

Freshman student at University of Texas at El Paso

Representative Tracy O. King  
DISTRICT 80



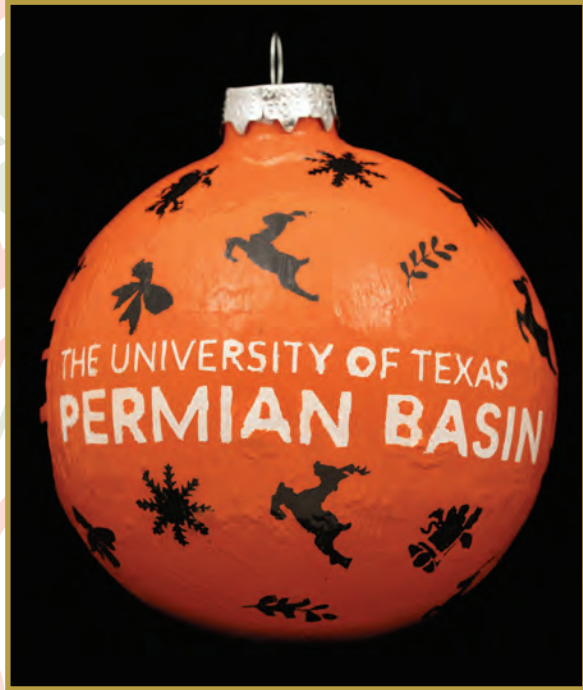
Artist: Lari Alejandro with creative assistance from Krissy Estrada

Inspired by “Uvalde Strong” as a symbol of strength for Uvalde following the tragedy at Robb Elementary.



# Representative Brooks Landgraf

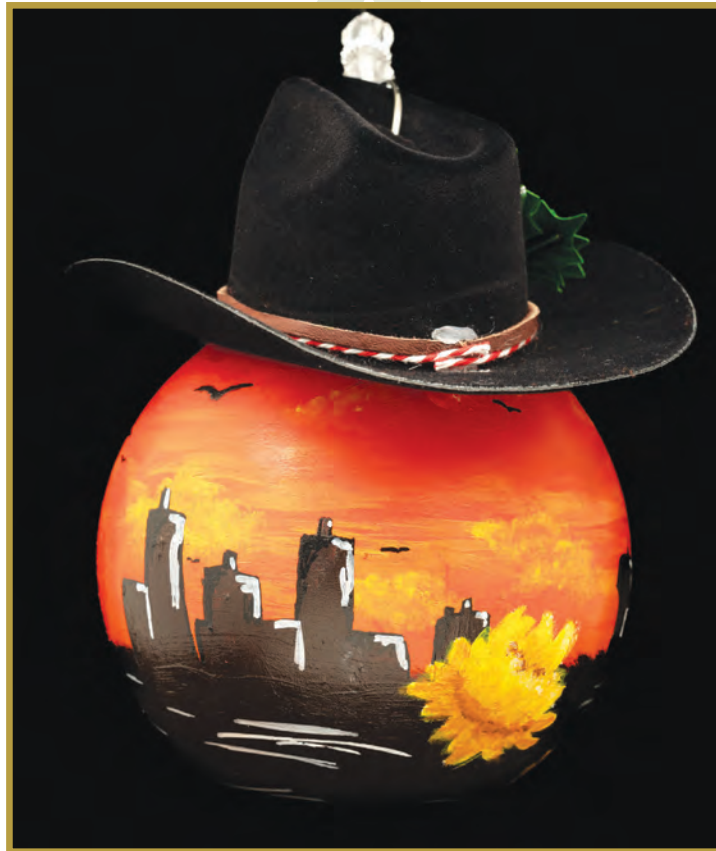
DISTRICT 81



Artist: Mr. Dustin Pardo

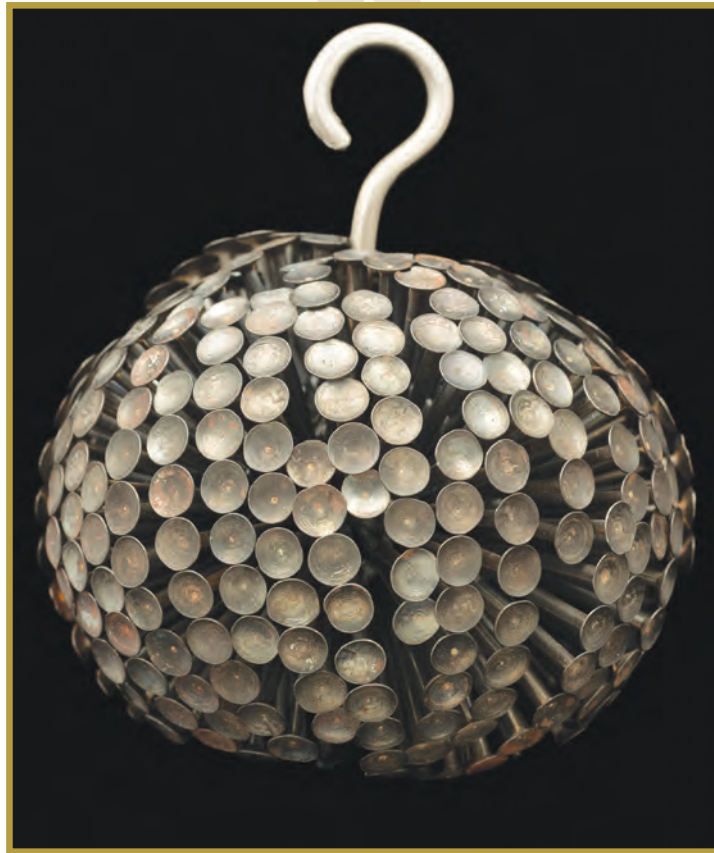
UTPB

Representative Tom Craddick  
DISTRICT 82



Representative Justin Burrows

DISTRICT 83



Artist: Jon Whitfill

Representative Carl H. Tepper

DISTRICT 84



Artist: Je'Sae Roberts

Lubbock Independent School District



Representative Stan Kitzman  
DISTRICT 85



FTAB

# Representative Four Price

## DISTRICT 87



Artist: Andrew Hall

HOODOO Mural Festival, presented by HOODOO Art Foundation, 501(c)3

Inspiring our community to unite through public art,  
urban beautification, and creativity

# Representative Ken King

## DISTRICT 88



Artists: Lawana Pullium, Assistant Director of Innovative Solutions-Region 16- serving 61 school districts in the Texas Panhandle; Mistie Walser, Theater Teacher Arts Director; Teddi Wilkinson, Elementary Librarian

A collaborative piece in appreciation and support of public school educators that work tirelessly and passionately for the children of not only District 88 but all of Texas

# Representative Candy Noble

DISTRICT 89





Representative Stephanie Klick

DISTRICT 91



Artist: Tynira Seals

IDEA Achieve Academy in Haltom City, TX

# Representative Salman Bhojani

## DISTRICT 92

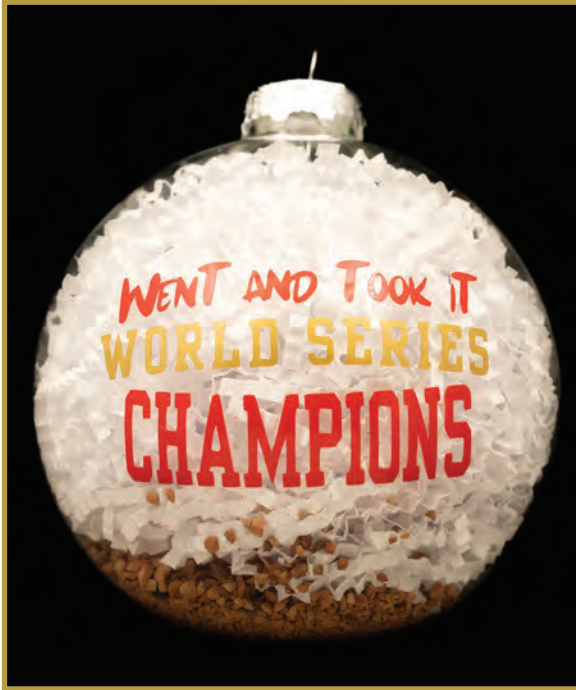


Artist: Gabrielle Berry

Trinity High School in Euless, Texas

# Representative Tony Tinderholt

DISTRICT 94



Artists: Amber Corley, Lorey Ivey

Went and Took It

Representative David Cook

DISTRICT 96





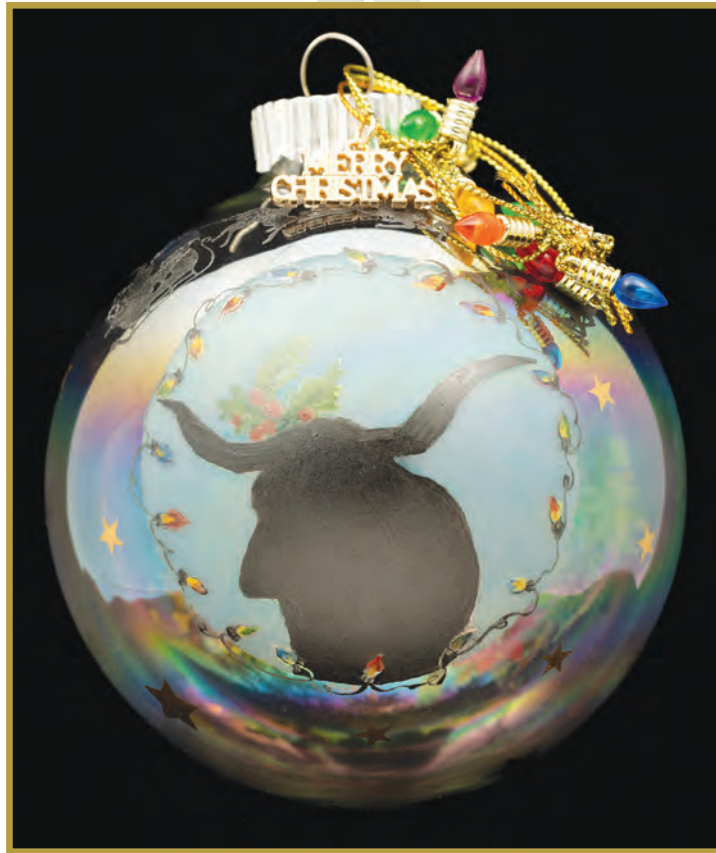
Representative Craig Goldman

DISTRICT 97



# Representative Giovanni Capriglione

DISTRICT 98



Artist: Susan Greathouse

International Porcelain Artists and Teachers, Inc.

# Representative Charlie Geren

## DISTRICT 99



Artist: Anne Geren Asadi

Asadi

# Representative Chris Turner

DISTRICT 101



Artist: Jenifer Muniz

Lamar High School, Arlington ISD



Representative Ana-Maria Ramos

DISTRICT 102



Artist: Jazmin Cuellar

# Representative Rafael Anchía

DISTRICT 103



Artists: Student artists Camila Lopez, Norah Krause, Margaret Dunn, Penny Montoya, Ridge Ramirez, Aiko De La Torre, Zadio Jasso, Isabella Oloarte, Noemi Rojas, and Camila Cortes under the guidance of Art Teachers Ms. Alice Segura and Ms. Karla De La Torre

In commemoration of Rosemont's 100th Anniversary

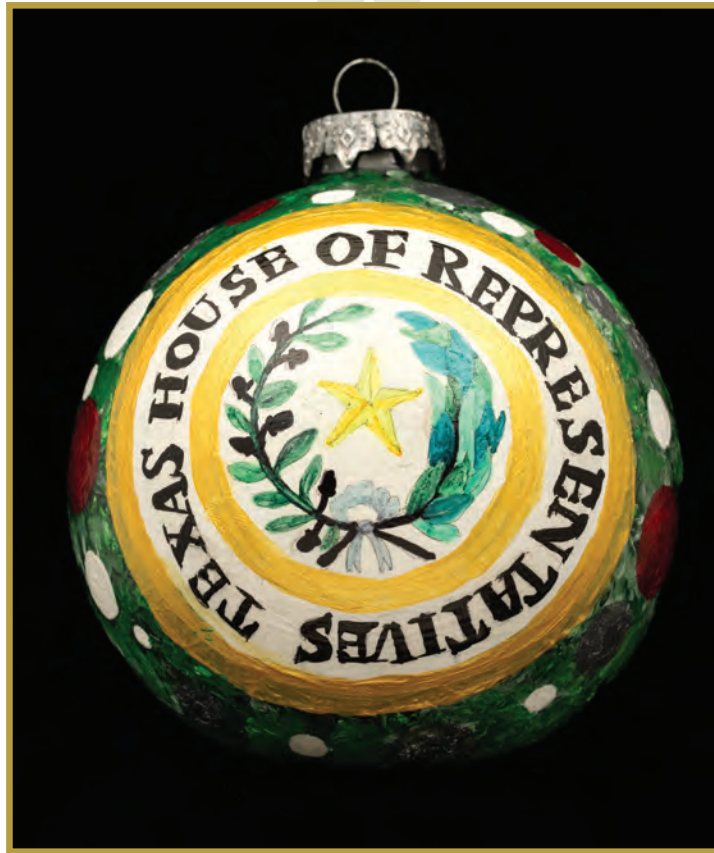
Representative Jessica González  
DISTRICT 104



Artist: Brenna Rusk  
Grand Prairie Fine Arts Academy

Representative Jared Patterson

DISTRICT 106



Artist: Student artist Riley Wells, under the guidance of teachers  
Kristine Lopez and Heather Jones

The Colony High School



Representative Morgan Meyer  
DISTRICT 108



Artist: Ms. Price Rhodes, 11th Grade Student

Highland Park High School

# Representative Toni Rose

DISTRICT 110



Artist: Derrick Burnett

Fine Arts

Representative Angie Chen Button  
DISTRICT 112



Artist: Macy Martin

J.J. Pearce High School

Representative Rhetta Andrews Bowers

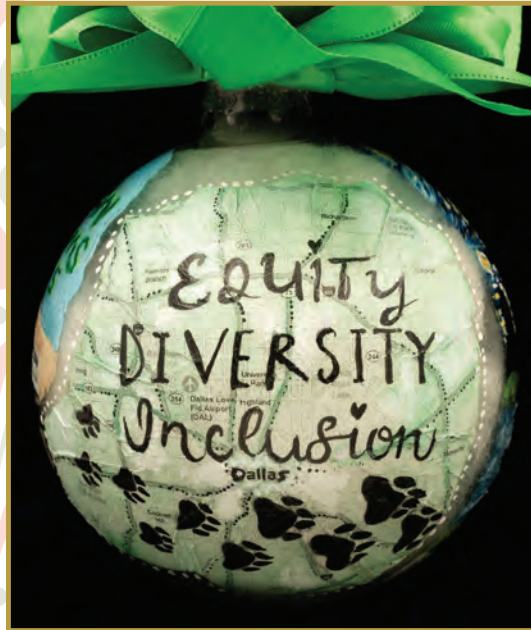
DISTRICT 113





# Representative John Bryant

## DISTRICT 114



Artists: Hugh Thompson, AP Studio Art & Design teacher;  
Cristina Zanagar, AP 3D Studio Art & Design teacher and Link Crew Coordinator;  
Amber Robbins, AP Studio Art & Design and Studio Art 1 teacher

Bryan Adams High School Leadership Academy

Representative Julie Johnson  
DISTRICT 115



Polk

Where students become legends

Representative Trey Martinez Fischer  
DISTRICT 116



San Antonio Children's Shelter

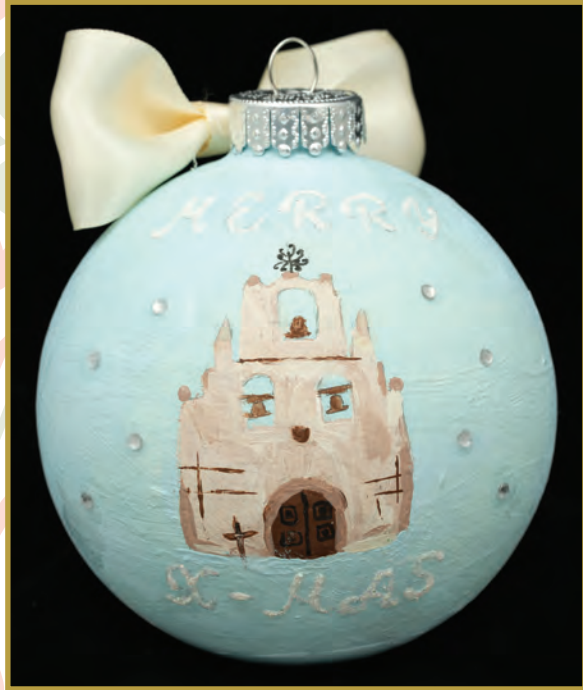
Representative Philip Cortez  
DISTRICT 117





Representative John Lujan

DISTRICT 118



Representative Elizabeth "Liz" Campos  
DISTRICT 119



Artist: Emily LaHood

Representative Steve Allison  
DISTRICT 121



Artist: Abby Smith

Alamo Heights High School



# Representative Mark Dorazio

DISTRICT 122



Artist: Donna Lent Russell

Envision Art



Representative *Diego M. Bernal*

DISTRICT 123



Representative Ray Lopez  
DISTRICT 125



Sul Ross

Representative Sam Harless

DISTRICT 126



Artist: CC

Representative Charles Cunningham  
DISTRICT 127



Artist: Randy Wrosiv

Rhodes High School for the Performing Arts



Representative Briscoe Cain

DISTRICT 128



# Representative Dennis Paul

DISTRICT 129



Artist: Elizabeth Paul

Representative Tom Oliverson, M.D.

DISTRICT 130



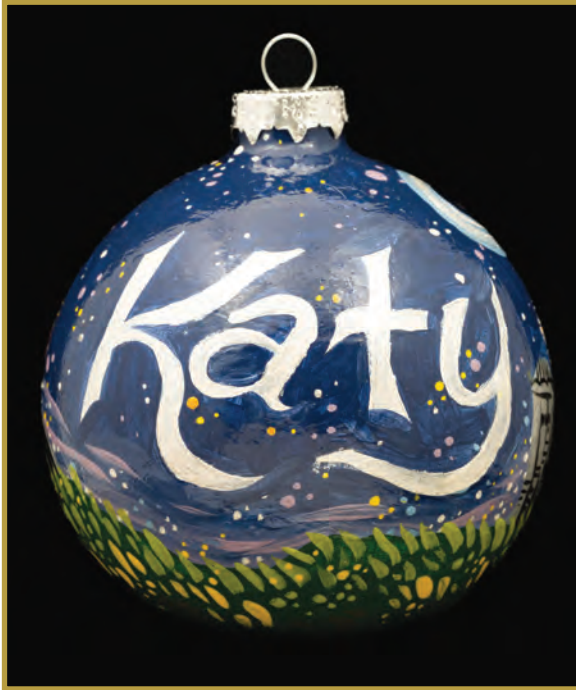
Artist: Izzi Hartman

Rosehill Christian School

Love was born

# Representative Mike Schofield

DISTRICT 132



Artist: Grace Abercrombie

Seven Lakes High School, Katy ISD

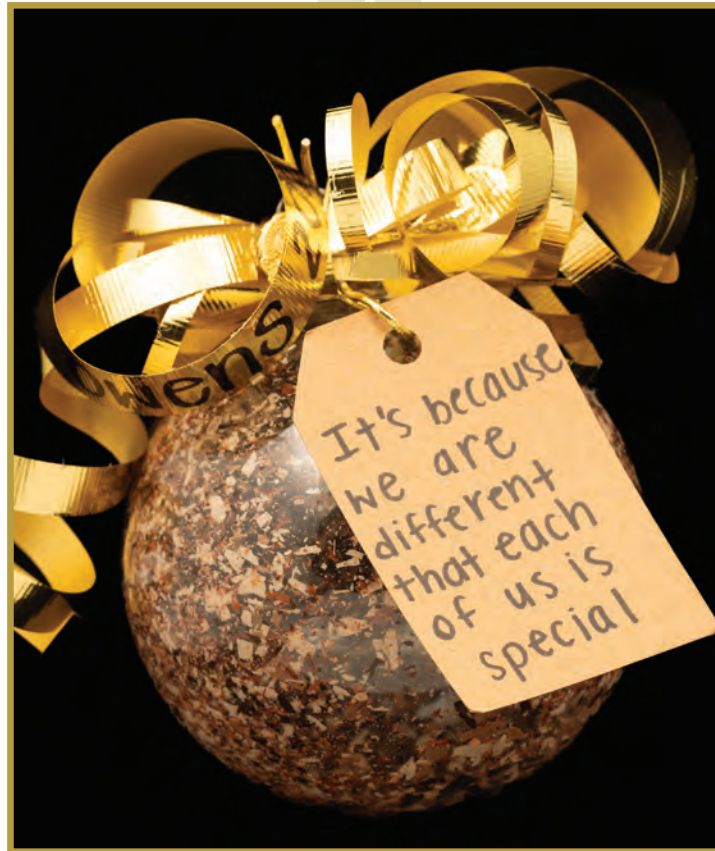


Representative *Mano De Ayala*

DISTRICT 133



Representative Jon E. Rosenthal  
DISTRICT 135



Owens 2023

It's because we are different that each one of us is special

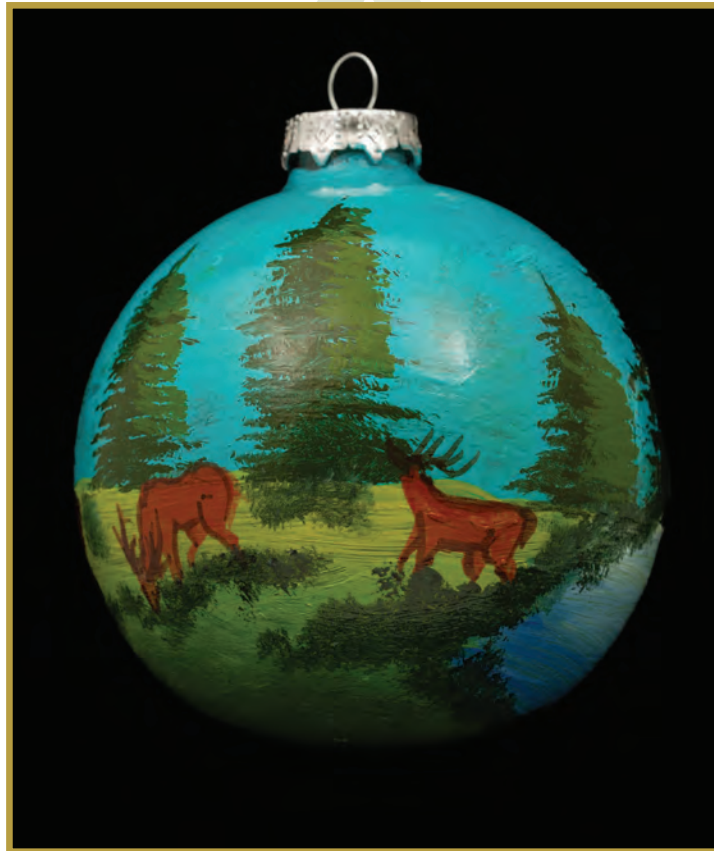
Representative John H. Bucy, III  
DISTRICT 136



Artist: Grace Piriya Kesmuti

Pond Springs Elementary

Representative Gene Wu  
DISTRICT 137



Artist: Lorenzo Noza

Baker Ripley Gulfton Sharpstown



# Representative Lacey Hull

DISTRICT 138



Artist: Yesenia Majano, 11th Grade Student

Spring Woods High School

Representative Armando Walle

DISTRICT 140



Representative Senfronia Thompson

DISTRICT 141



Artist: Tiffany R. Jack

Kipani Unlimited

Representative Mary Ann Perez  
DISTRICT 144



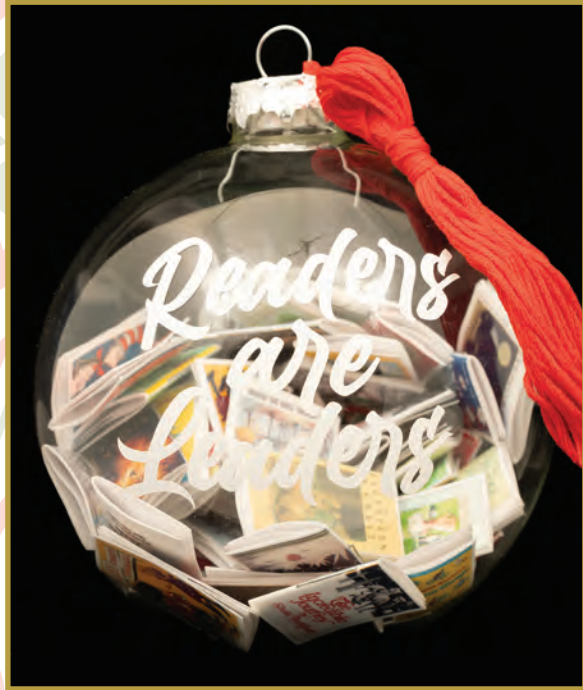
Artist: Elder Gomez, 4th Grade Student

Raul Yzaguirre Schools for Success



# Representative Christina Morales

DISTRICT 145



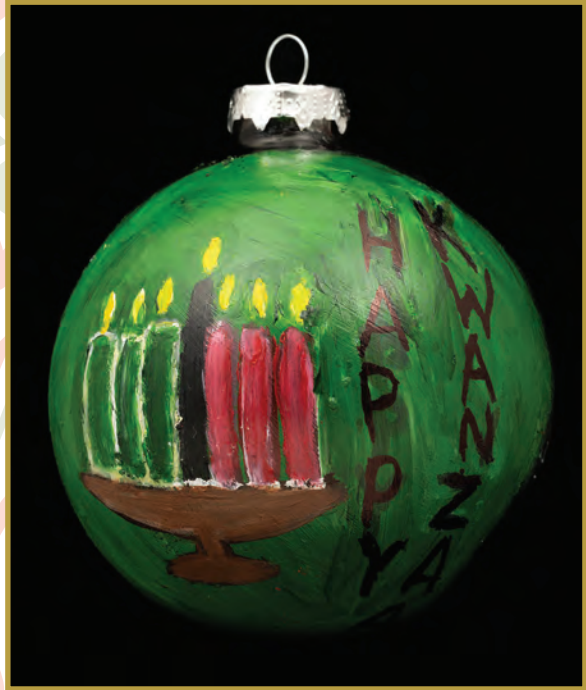
Readers are leaders

Representative Shawn Thierry

DISTRICT 146



Representative Yolanda "Jo" Jones  
DISTRICT 147



Happy Kwanzaa



Representative Penny Morales Shaw

DISTRICT 148



EWE