



‘TIS THE SEASON  
2016



## *House Chamber Christmas Tree*

### *2016*

Celebrate the season and the creativity of Texans from across the state.

Members of the Texas House of Representatives were invited to select a constituent to create a Christmas ornament to showcase unique elements of their house districts. These ornaments now hang proudly on this native Texas tree in celebration of the many facets of our nation's second largest state, home to over 27 million people.

The photo albums displayed here provide the opportunity for a closer look at the handcrafted treasures that have been received this year. Ornament albums are assembled chronologically by district number. To look for your hometown's district, please reference the nearby House district map.

\*\*\*

*The Texas House of Representatives is proud to display trees that were provided by the Texas Christmas Tree Growers Association in conjunction with the organization's president, Carla Jones, including this 26-foot Virginia pine, compliments of Marshall and Sharlote Cathey of Elves Farm in Denison. Additional trees, three 7-foot Virginia pines, and two 10-foot Fraser firs, compliments of Carla and Bob Jones of Spring Creek Growers in Montgomery County, are located throughout the Capitol.*



## *Dedication*

*As 2016 comes to a close and we prepare for the 85th Legislative Session, we take time to lovingly remember those close to our hearts who have recently left us.*

*We remember and hold dear:*

*Babs Miller  
(1947-2016)*



*Barbara Stephenson  
(1948-2016)*



*We love you and miss you.*



# REPRESENTATIVE GARY VANDEAVER

*District 1*



The District 1 ornament showcases the state bird of Texas, the northern mockingbird, perched on a branch of bluebonnets, the state flower. The reverse side features the Texarkana College logo. The ornament is covered in glitter and sparkles like the stars over Texas. Texarkana College provides not only a great secondary education with fantastic instructors, but also a sense of community where everyone is welcome.

*Artist: Tamii Whitworth  
Texarkana College*



## REPRESENTATIVE DAN FLYNN

*District 2*



*The* District 2 community values religion and artwork, both of which are represented in this ornament. The design combines Vincent van Gogh's *Starry Night* painting with the story of the three wise men in the New Testament of the Bible to create an artistic retelling of the traditional story of Christmas.

*Artist: Madeline Miller, 10th Grade  
(Bill Shiflet, Teacher)  
Greenville High School, Greenville ISD*



## REPRESENTATIVE CECIL BELL, JR.

*District 3*



*This* ornament is filled with images and items important to the District 3 community. A plastic transparency was used to draw the New Caney ISD boundary lines and logo. Porter High School's new football stadium is represented as well. Inside are items meant to represent the community's roots: a small pine cone, sawdust and a handmade miniature saw blade. These reference the importance of the sawmill and timber industry to this area.

*Artist: Kendall Wienken, Art Club President  
(LaShawna Rhoden, Teacher)  
Porter High School, New Caney ISD*



## REPRESENTATIVE STUART SPITZER

*District 4*



*This* ornament is made up of the fingerprints of the students in a third-grade class at Barbara Walker Elementary, located between the towns of Crandall and Forney. Students, teachers and administrators each contributed a fingerprint to create a string of Christmas lights on the ornament.

*Artists: 3rd Grade Students  
(Missy Collins and Jessica Brown, Teachers)  
Barbara Walker Elementary, Crandall ISD*





## REPRESENTATIVE DAVID SIMPSON

*District 7*



*This* ornament, entitled “For Liberty,” honors East Texans who have not only served with distinction, but also preserved this great state and its people’s liberties, while upholding their principles in the process. East Texas is proud of producing men like C.B. Kilgore, who when confronted with tyranny on the House floor of Congress, stood up and showed his opposition by exclaiming, “Make way for liberty!”

*Artists: Kristi and Michael Bullock*



## REPRESENTATIVE BYRON COOK

*District 8*



*The* courthouses from Anderson, Freestone, Hill and Navarro Counties of District 8 are represented on this year's ornament. Although each courthouse's architecture is magnificent, it is the people who have walked through their doors and the history that has been made inside their walls that makes them beautiful.

2 Chronicles 7:14

*Artist: Kelly Moore*



## REPRESENTATIVE CHRIS PADDIE

*District 9*



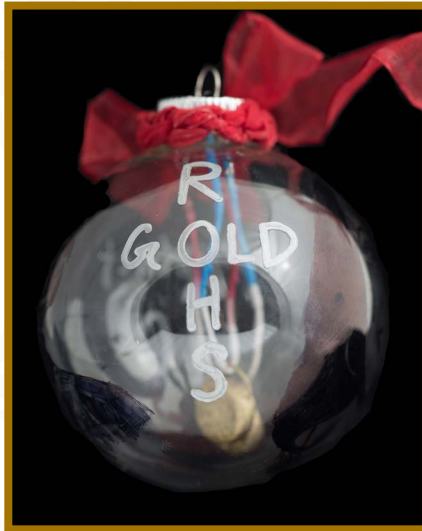
*This* ornament illustrates the Wonderland of Lights, which takes place in the Marshall downtown square every year during the Christmas season. Twinkling bright lights illuminate the courthouse and its landscaping. This ornament is meant to represent the joy and happiness of this time of year as we celebrate Christ's birthday. Merry Christmas and happy holidays!

*Artist: Evelyn Carlile, 5th Grade  
Trinity Episcopal School*



## REPRESENTATIVE JOHN WRAY

*District 10*



District 10 is home to motivated, hard-working individuals who give their all to what matters to them most. It is a proud district of champions, claiming two gold medal Olympians from Red Oak ISD: Louise Ritter, who won the gold medal in the women's high jump at the 1988 Summer Olympics in Seoul, South Korea; and Michelle Carter, who won the gold medal in women's shot put at the 2016 Summer Olympics in Rio de Janeiro, Brazil. Two of Mrs. Mentzel's advanced drawing students collaborated with one of Coach Renner's ceramics students to create this dynamic multi-media ornament to commemorate these champions.

*Artists: Chloe Munoz (12th Grade), LaJon Griffin (11th Grade)  
and Bailey Gajdica (10th Grade)  
Alexia Mentzel and Kevin Renner, Teachers  
Red Oak High School, Red Oak ISD*



## REPRESENTATIVE TRAVIS CLARDY

*District 11*



*This* ornament features a lumberjack—the name of the athletics teams and the nickname for students at Stephen F. Austin State University, inspired by the piney woods of District 11.

*Artist: Jeffie Brewer  
Stephen F. Austin State University*



## REPRESENTATIVE KYLE KACAL

*District 12*



*The District 12 ornament is decorated with Waco landmarks such as the suspension bridge and the Waco Hippodrome. These images are significant as they represent Waco's newfound status as a cultural arts district.*

*Artist: Susan L. Sistrunk*



# REPRESENTATIVE LEIGHTON SCHUBERT

*District 13*





## REPRESENTATIVE JOHN RANEY

*District 14*



*The* District 14 Christmas ornament is adorned with three clusters of grapes symbolizing the wineries in Bryan and College Station. The artist, a retired art and science teacher for 31 years in Bryan, used purple and bright green pearl clays to form the grapes. The clear glass ornament was painted with two coats of silver glitter paint. The words “District 14” were applied with silver glitter letters.

*Artist: Millie Holden Ehsani*





## REPRESENTATIVE WILL METCALF

*District 16*



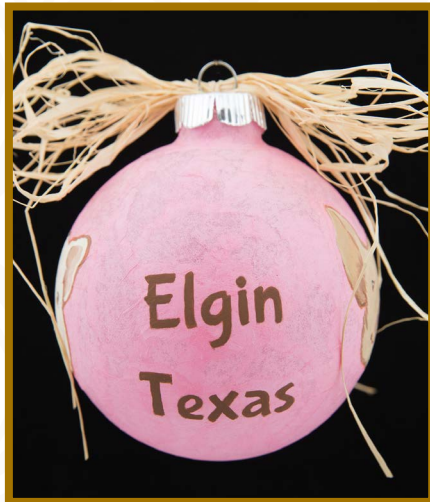
*With an abundance of local recreational activities available in District 16, such as fishing, boating and hunting, residents consider Montgomery County to be the 'gold standard' - thus the inspiration for this glitzy ornament.*

*Artist: Sandy Riney*



# REPRESENTATIVE JOHN CYRIER

*District 17*



*The* District 17 ornament showcases the Hogeye Festival in Elgin. Located in Bastrop County, this annual fall festival features a barbecue cook-off and other events.

*Artist: Marcia Jackson, Art Teacher  
Elgin High School, Elgin ISD*



# REPRESENTATIVE JOHN OTTO

*District 18*



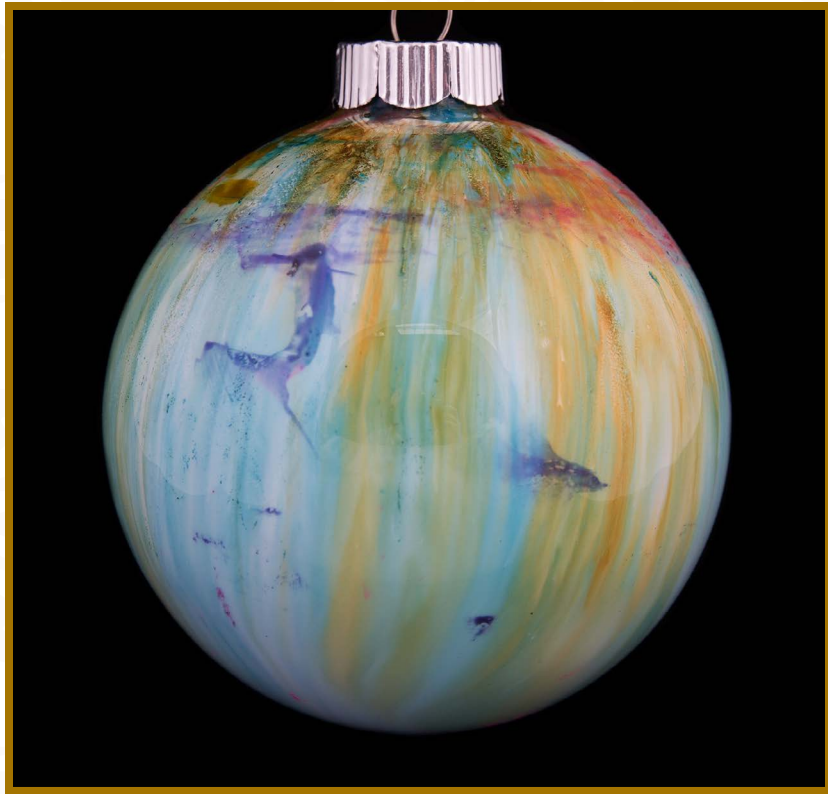
*This* ornament is made up of a patchwork of roadmaps covering the area of District 18. Rep. John Otto said when he started the journey to represent District 18 in 2005, he had no idea of the places he would go and the people he would meet. District 18 covers 2,600 square miles and is home to farmers, ranchers, small and large business owners, chemical plant workers, schoolteachers and retirees. It houses a state university, 11 prisons and 59 public schools. Rep. Otto said it has been an honor to travel throughout the district and meet so many hard-working East Texans. God bless this great state!

*Artist: Mrs. Nancy Otto*



# REPRESENTATIVE JAMES WHITE

*District 19*



*This ornament represents a sunset on the lake.*

*Artist: Gem Holt, Art Teacher  
Woodville High School, Woodville ISD*



# REPRESENTATIVE MARSHA FARNEY

*District 20*





## REPRESENTATIVE DADE PHELAN

*District 21*



*D*istrict 21's ornament is decorated in a manner representing Orange County. A bigmouth bass in mid-flight, painted over an orange background, showcases a popular pastime in the district.

*Artist: Betsy Kaufman, Art Teacher  
Little Cypress-Mauriceville High School*



# REPRESENTATIVE JOE DESHOTEL

*District 22*



*This hand-glittered ornament showcases the oil derricks of the Beaumont Boomtown region of District 22.*

*Artist: Joy Cole*



# REPRESENTATIVE WAYNE FAIRCLOTH

*District 23*



*As* Galveston College celebrates its 50th year anniversary, the District 23 ornament honors the long-standing community college on Galveston Island. The institution provides educational opportunities for students in the area to address the workforce needs of the community.

*Artist: John Stovall*





## REPRESENTATIVE GREG BONNEN

*District 24*



*The* 5th grade art guild students at Bales Intermediate School created the character tree inside this ornament and the other decorations. The ornament represents the long-standing character education program in Friendswood ISD in District 24. The six character pillars are the foundation of the character education program, and this program is a hallmark in Friendswood ISD.

*Artists: 5th Grade Art Guild:*

*Aubrey Smith, Madyson McAshlan, Brendan Baker,  
Grace Greenlaw, Chloe Clement, Alexandra Garcia,  
Addison Williams, Jennifer Sanchez and Maya Mahaney, Students  
Nancy Schilhab, Teacher  
Zue S. Bales Intermediate School, Friendswood ISD*



## REPRESENTATIVE DENNIS BONNEN

*District 25*



*D*istrict 25 boasts many iconic Texas landmarks, including the focal point of this ornament: David Adickes' statue of Stephen F. Austin, which stands 76 feet tall and greets travelers on Highway 288 in Angleton. Other favorite attractions represented on the ornament include the historic Antonelli's Keg Root Beer stand and Willie-Man-Chew, the mascot of the world-famous annual Great Texas Mosquito Festival in Clute. The state shell of Texas, the lightning whelk, calls to mind the Brazosport Museum of Natural Science, located in Clute, and its role in establishing the official designation of this distinctive and interesting example of Texas coastal fauna.

*Artist: Barbara Feiner  
Brazosport Art League*



## REPRESENTATIVE RICK MILLER

*District 26*



*This* ornament features a photo of Sugar Land City Hall, which is located in the Sugar Land Town Square in District 26, a vibrant destination in the heart of the city. It offers shopping, dining, a world-class hotel and conference center, prime office space and community events.

*Artist: Morgan Lasala*



## REPRESENTATIVE RON REYNOLDS

*District 27*



*An eagle, the mascot for Willowridge High School, was the inspiration for the District 27 ornament. Willowridge opened in 1978 as the second high school in Fort Bend ISD. In the 1980s, the school was known for its successful football program. During the 1982-83 season, NFL Hall of Famer Thurman Thomas led the football team to the Texas Class 4A State Championship.*

*Artist: Gianni Gordon, 10th Grade  
Willowridge High School Art Club  
(Lloyd G. Wade, Teacher)  
Willowridge High School, Fort Bend ISD*



## REPRESENTATIVE JOHN ZERWAS

*District 28*



*This whimsical ornament features longhorns as reindeer who have mischievously broken a few ornaments, to Santa's consternation.*

*Artists: Collaborative Piece*



## REPRESENTATIVE ED THOMPSON

*District 29*



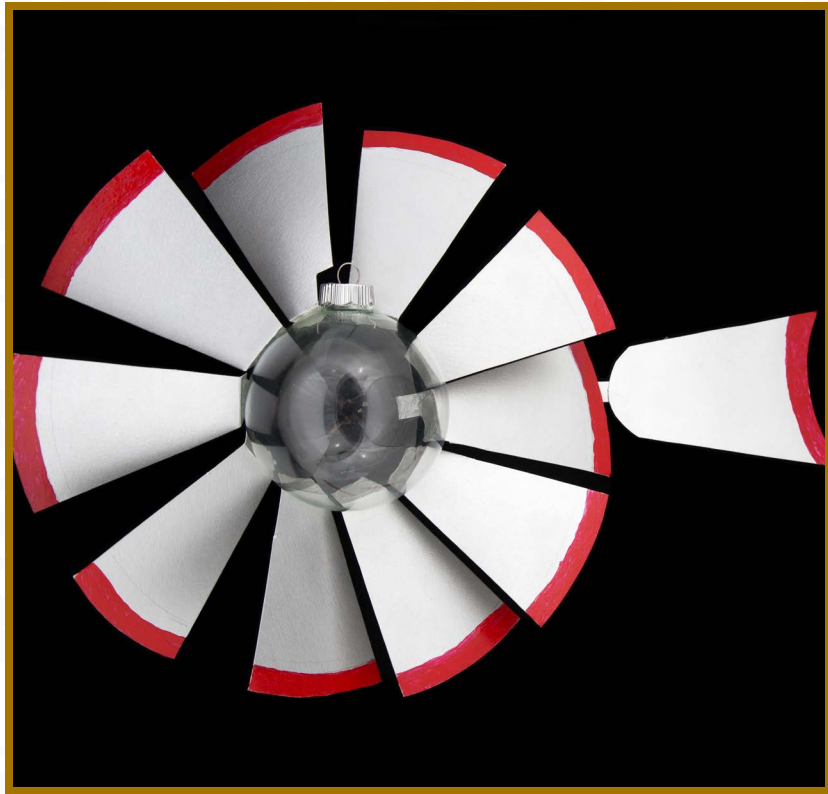
Created by a mixed media artist with a focus on space-themed work, this ornament utilizes economical materials and by doing so, gives them a new status and identity. The artist worked to showcase the narrative of each distinct material in the piece. She wanted to represent the dynamics of class and identity, which are constantly reassigned and sometimes inherited.

*Artist: Jennifer McClish  
Alvin Community College, Art Department*



# REPRESENTATIVE RYAN GUILLEN

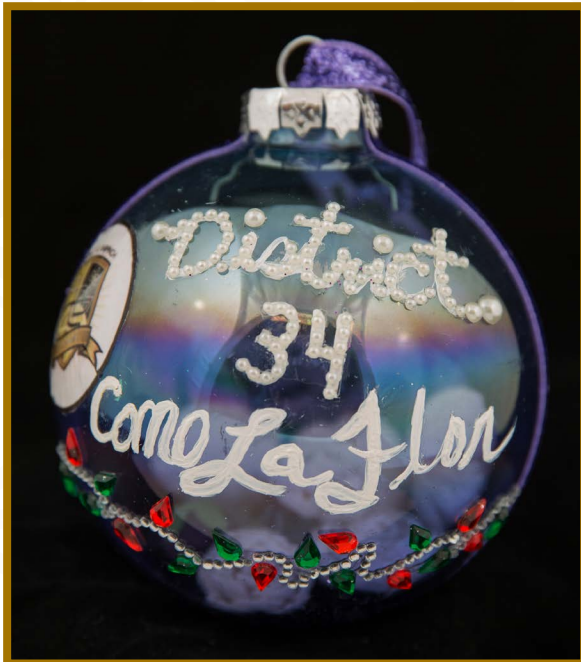
*District 31*





## REPRESENTATIVE ABEL HERRERO

*District 34*



*This* ornament, entitled “Como La Flor,” features a painted white rose and the name “Selena” made out of Swarovski crystals. Selena is seen as an icon, especially in the Coastal Bend area of Texas. Even after her death, she is still celebrated for her music and lasting impact on Tejano music. One of her most famous and widely recognizable songs is entitled, “Como La Flor.”

*Artists: Janelle Perez, Lori Saenz, Marie Rivera and Melissa Majek  
Harold T. Branch Academy, Corpus Christi ISD*





## REPRESENTATIVE OSCAR LONGORIA

*District 35*



*This* year's hand-painted ornament for District 35 celebrates the beautiful history and culture of Ballet Folklórico. District 35 is home to several award-winning high school Ballet Folklórico groups, as well as local Folklórico community groups and world-renowned instructors. Folklórico dance has become a staple of the high schools and communities in District 35, the Rio Grande Valley, and the state of Texas. It combines mariachi music with traditional South Texas and Northern Mexico costumes and dance routines. The ornament is adorned with the image of a Ballet Folklórico dance couple performing a routine amid a background of palm trees to represent the lush sub-tropical landscapes found within the area.

*Artist: Fany Mares Potter*



REPRESENTATIVE SERGIO MUÑOZ, JR.

*District 36*





# REPRESENTATIVE ARMANDO MARTINEZ

*District 39*



*This* ornament represents both of Weslaco ISD's football teams and marching bands to showcase the school spirit on both sides of District 39.

*Artist: Amber Ortiz, 12th Grade  
Weslaco East National Art Honor Society  
(James Miller, Teacher)  
Weslaco East High School, Weslaco ISD*



## REPRESENTATIVE TERRY CANALES

*District 40*



*This ornament features the University of Texas at Rio Grande Valley's mascot, the Vaquero (Spanish for "cowboy"), pulling Santa's sleigh as he flies over farms and the Hidalgo County Courthouse.*

*Artist: Gaby Rico*



## REPRESENTATIVE R.D. “BOBBY” GUERRA

*District 41*



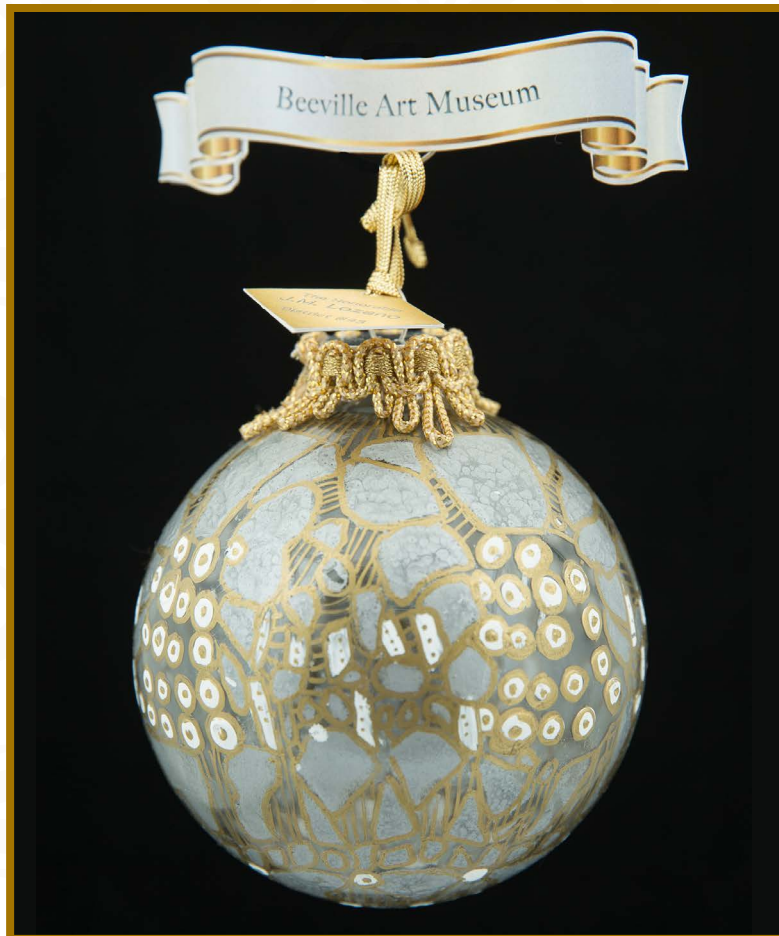
The District 41 ornament honors the International Museum of Art and Science (IMAS) located in McAllen. Serving as the region’s premier museum, IMAS symbolizes the unique cultural and educational significance that the Rio Grande Valley adds to the diverse fabric of Texas. The ornament includes the iconic red statue that adorns the front lawn of the museum, which represents IMAS’ lasting impression in the Rio Grande Valley.

*Artist: Jorge Cruz  
International Museum of Art and Science*



## REPRESENTATIVE J.M. LOZANO

*District 43*



*The* District 43 ornament features a unique spin on the classic holiday ornament. A traditional handmade doily base is augmented with various paints, markers, trim and paper. This hand-crafted ornament is representative of the district's many artistic citizens.

*Artists: Beeville Art Museum Staff*



## REPRESENTATIVE JASON ISAAC

*District 45*



*The* famous painting *Starry Night* by Vincent van Gogh inspired this ornament, along with lyrics from the well-known folk song “Deep in the Heart of Texas.” This design illustrates the natural beauty of Central Texas and the pride of the people who live there.

*Artist: Olivia Bonin, 11th Grade  
Hays High School, Hays CISD*



# REPRESENTATIVE PAUL WORKMAN

*District 47*



*D*istrict 47's ornament is illustrative of Lake Travis during the 2016 year, showing the lake full of water, with water activities and great fishing opportunities.

*Artists: Judy Wisdom and Bell Crawford*





# REPRESENTATIVE DONNA HOWARD

*District 48*





## REPRESENTATIVE ELLIOTT NAISHTAT

*District 49*



*This* ornament portrays aspects of Rep. Naishtat's career. The human heart represents Rep. Naishtat's commitment to health and human services for low and medium income residents of District 49. The lines within the heart outline the district and the background is an impressionist depiction of the Austin skyline.

*Artist: Stephanie Sandoval  
Mexic-Arte Museum*



## REPRESENTATIVE CELIA ISRAEL

*District 50*



*S*tudents chose to recreate Amate bark paintings, a traditional Mexican folk art, on this ornament. Appreciation and celebration of the cultural diversity of Texans and District 50 is achieved through this bird painted in the Amate style.

*Artists: Jennifer Beltran and 5th Grade Students  
(Maureen Sondag, Teacher)  
Barrington Elementary School, Austin ISD*



# REPRESENTATIVE EDDIE RODRIGUEZ

*District 51*



*This* ornament commemorates the strength and perseverance of the Perez Elementary and Dove Springs communities in response to the 2013 Halloween flood.

Perez Strong, Perez Fuerte!

*Artists: Isabel Marquez*

*Guidance Counselor and Leader, Perez Student Leadership Group  
and Marcela Kourkova, Art Teacher*

*L. Cpl. Nicholas S. Perez Elementary School, Austin ISD*



# REPRESENTATIVE LARRY GONZALES

*District 52*





## REPRESENTATIVE ANDREW MURR

*District 53*



*The* state bird, the northern mockingbird, is portrayed feasting on agarita berries, a common native plant which grows throughout the rural landscapes of District 53. This ornament celebrates the beauty and diversity of the native plants and animals in this area.

*Artist: Martha Richardson*



# REPRESENTATIVE JIMMIE DON AYCOCK

*District 54*



*This* ornament represents Lampasas in simpler times, back when the thrill of each week was filling a car up with gas at 19 cents per gallon, then driving up and down Key Avenue, waving at friends, enjoying a soda at Dairy Queen, and catching a movie at the Circle Drive-In. This way of life in “Small Town, USA” brings back cherished memories, no matter one’s age.

*Artist: Dorinda Barrett  
Vision Lampasas*



## REPRESENTATIVE MOLLY WHITE

*District 55*



*D*istrict 55 is home to Belton Lake and Stillhouse Hollow Lake, both of which are maintained by the Army Corps of Engineers. These lakes provide great fishing, boating and recreational opportunities as well as important water supply and flood control.

*Artist: Amber Gabriel*





# REPRESENTATIVE CHARLES “DOC” ANDERSON

*District 56*



*This* ornament depicts Jacob Raphael De Cordova (1808–1868), who served in the Texas House of Representatives during the 2nd Legislature. De Cordova was a Texas land agent, cartographer and colonizer, who mapped the town of Waco in 1848-49. During that time, town lots sold for \$5 an acre, and farmland sold for \$2-3 an acre. De Cordova, along with Robert Creuzbauer, was well known for the compilation of the map of the state of Texas in 1849, which has since served as the basis of Texas maps.

*Artist: Jesus Rivera  
Creative Waco*



## REPRESENTATIVE TRENT ASHBY

*District 57*



*This* ornament, representative of typical small towns in West Texas, features a barn with a windmill, dirt roads and trees in a field, all surrounded by bluebonnets. These classic Texas symbols were chosen not only for their beauty, but also for their intrinsic uniqueness. A feeling of Christmas is suggested through the unlikely mingling of snow with the bluebonnets. This outdoor scene is meant to convey the beauty and peacefulness of living in Texas.

*Artist: Reagan Wren, 11th Grade  
(Cheryl Lamon, Teacher)  
Hudson High School, Hudson ISD*



## REPRESENTATIVE DEWAYNE BURNS

*District 58*



*The Cleburne Whistle Stop is an annual tradition in Cleburne when the city lights up Hulen Park with thousands of Christmas lights. It's a wonderful sight in District 58, and is represented on this ornament.*

*Artist: Andrea Wilson*



## REPRESENTATIVE J.D. SHEFFIELD

*District 59*



*The* beauty of Hamilton during winter with winter foliage and red cardinals is illustrated on the District 59 ornament.

*Artist: Catherine Kinsey, 12th Grade  
(Patricia Keoughan, Teacher)  
Hamilton High School, Hamilton ISD*



## REPRESENTATIVE JIM KEFFER

*District 60*



*Rep.* Keffer's grandchildren, Brooklyn, 8, and Braxton, 5, wanted to paint an ornament that captured the true meaning of Christmas.

They decided an angel would be perfect to illustrate Luke 2:9-11:

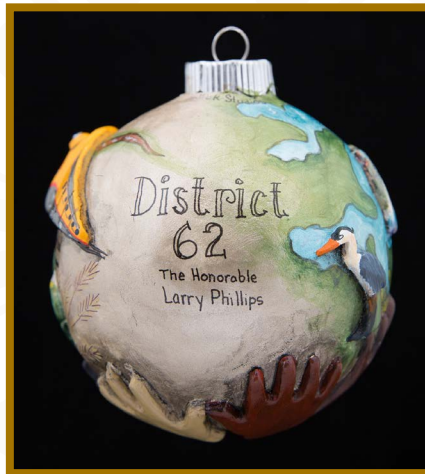
“And an angel of the Lord suddenly stood before them, and the glory of the Lord shone around them; and they were terribly frightened. But the angel said to them, ‘Do not be afraid; for behold, I bring you good news of great joy which will be for all the people, for today in the city of David there has been born for you a Savior, who is Christ the Lord.’”

*Artists: Brooklyn and Braxton Keffer  
(Bonnie Shipley, 2nd Grade Teacher)  
Regents School of Austin*



## REPRESENTATIVE LARRY PHILLIPS

*District 62*



On this ornament, the artist chose to focus on the many features of District 62, such as trade and farming along the Red River and the introduction of the railroad. Later, Perrin Air Force Base arrived and brought more people from every corner of the U.S. (before closing in 1971). The building of Lake Texoma created a water source vital to the area, as well as a recreational treasure and a habitat to many beautiful birds and other animals that either migrate through the area or call it home. Two highly traveled highways cross the district, connecting West Texas to the East Coast, and the southern coast of Texas to the northern U.S. border. Many nationalities come together at this crossroads and call District 62 home.

*Artist: Lisa Mitchell*



## REPRESENTATIVE MYRA CROWNOVER

*District 64*



*The* artists' thumbprints were used to create a strand of multi-colored Christmas lights.

*Artists: Claire, Ben and Carter Crownover  
Grandchildren of Rep. Crownover*



## REPRESENTATIVE RON SIMMONS

*District 65*



*The District 65 ornament features the artist's favorite video games showcased in a Christmas theme. Shrinky Dinks were the chosen medium as they can be drawn and colored on before being transformed into miniature pieces.*

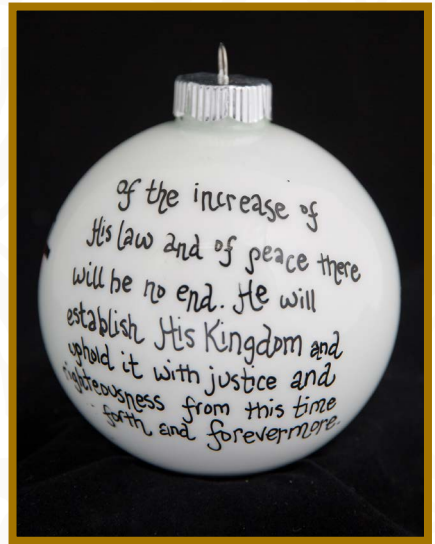
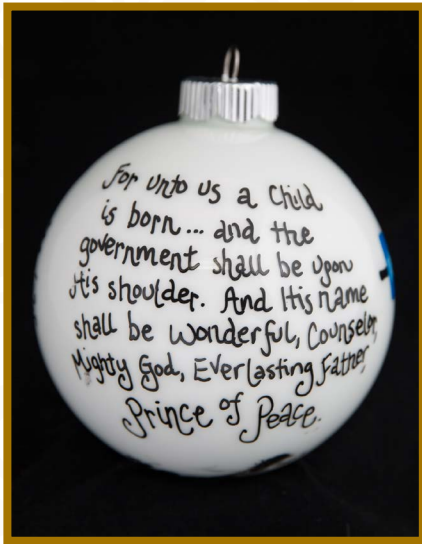
*Artist: Seth LeMaster, 12th Grade  
(Marty Kruk, Teacher)  
Flower Mound High School, Lewisville ISD*





## REPRESENTATIVE JEFF LEACH

*District 67*



*This* ornament focuses on God's rule of law in the systems of government. As many celebrate the birth of Jesus, this ornament acknowledges God as the judge and ruler of all and prays for his continued blessings on this land and on all who live in, serve and govern the great state of Texas.

*Artists: Darlene Leach (Concept & Design) and Elaine Tate (Painting)*



## REPRESENTATIVE DREW SPRINGER

*District 68*



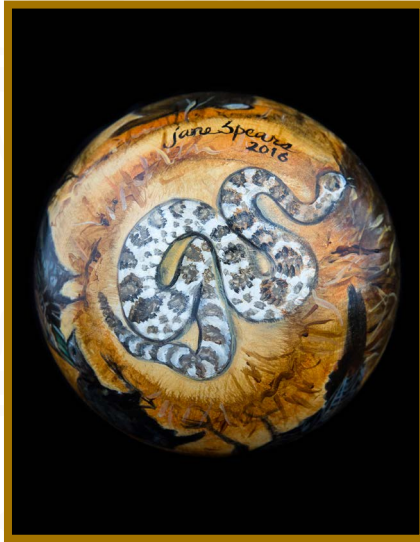
*The* traditional design of this ornament was inspired by District 68's festive Christmas celebrations. The ornament includes Santa Claus at the center, with a snowman and Christmas tree nearby. The artist said the District 68 community helped him succeed in reaching his artistic goals, so he chose to include a little of his own journey in the ornament, as represented by the New York City skyline.

*Artist: Francisco "Frankie" Luna III, Freshman Art Student  
PrattMWP Art Institute*



## REPRESENTATIVE JAMES FRANK

*District 69*



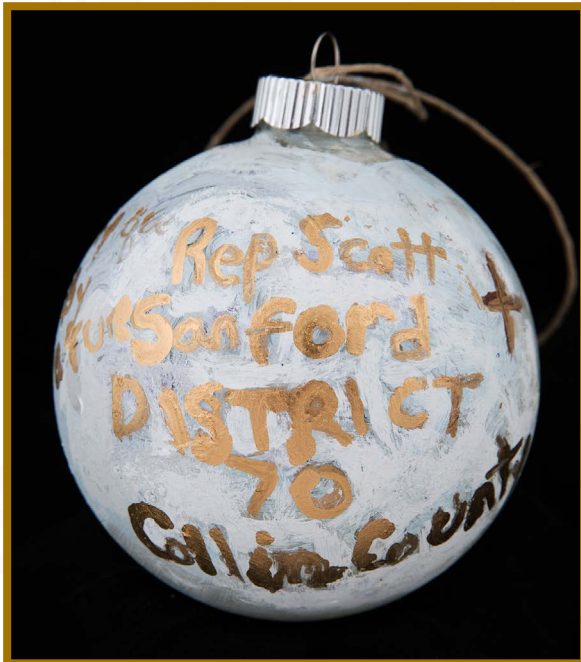
*The* North Central Plains region is blessed with an abundance of natural wildlife, which is represented in this painting of wild turkeys, a deer, a rabbit, a fox, ducks, geese and, of course, a rattlesnake. The beginning of hunting season, always greatly anticipated by landowners and hunters, is a major source of revenue for District 69.

*Artist: Jane Spears Carnes*



# REPRESENTATIVE SCOTT SANFORD

*District 70*



*This ornament features a home, to represent the family-friendly environment of McKinney and District 70.*

*Artists: Emily Pulley, 4th Grade  
Magda Dia, Teacher  
McKinney Art Studio*



## REPRESENTATIVE DREW DARBY

*District 72*



*This ornament is a hand-painted miniature replica of the artist's original painting entitled *West Texas Sunset*. It depicts the magnificent sunsets unique to West Texas, displaying a vast range of breath-taking and brilliant colors.*

*Artist: Raul Ruiz*



## REPRESENTATIVE DOUG MILLER

*District 73*



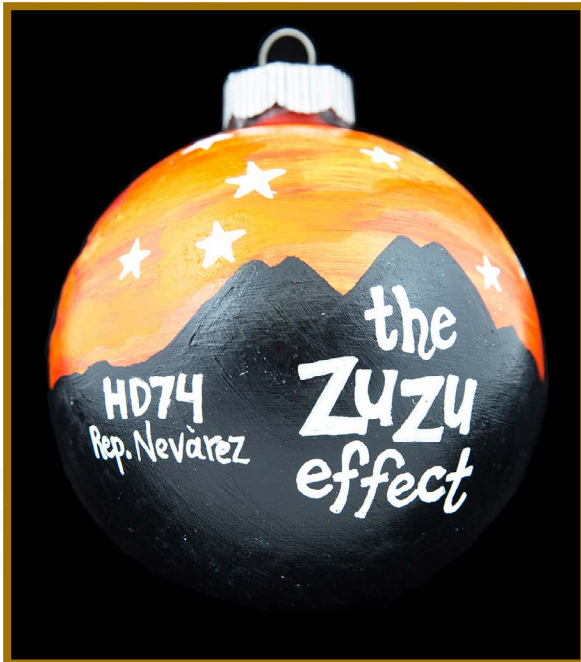
*P*ortraits of Rep. Doug Miller and his wife Anne are featured on this ornament to call attention to his service in the Texas House of Representatives as well as their contribution to the management, health and welfare of District 73.

*Artist: Jane Felts Mauldin*



## REPRESENTATIVE PONCHO NEVÁREZ

*District 74*



*The* front of this year's ornament captures the silent silhouette of the Twin Peaks Mountains in Brewster County. The back of the ornament is decorated with a flower species from Big Bend, the *Mentzelia multiflora*—also known as Adonis blazingstar.

These flowers represent community growth and strength throughout District 74 following the disappearance of Sul Ross State University student Zuzu Verk.

“In the end, your life will not be defined by your name, title, or status. It will be defined by how you lived, loved, and served others.”

*Artist: Audrey Iniguez*



# REPRESENTATIVE MARY GONZÁLEZ

*District 75*



*This* ornament was painted by Rob Mack, owner of Rob Mack Studio and Gallery in the Historic City of San Elizario.

*Artist: Rob Mack*





# REPRESENTATIVE MARISA MÁRQUEZ

*District 77*





## REPRESENTATIVE TRACY O. KING

*District 80*



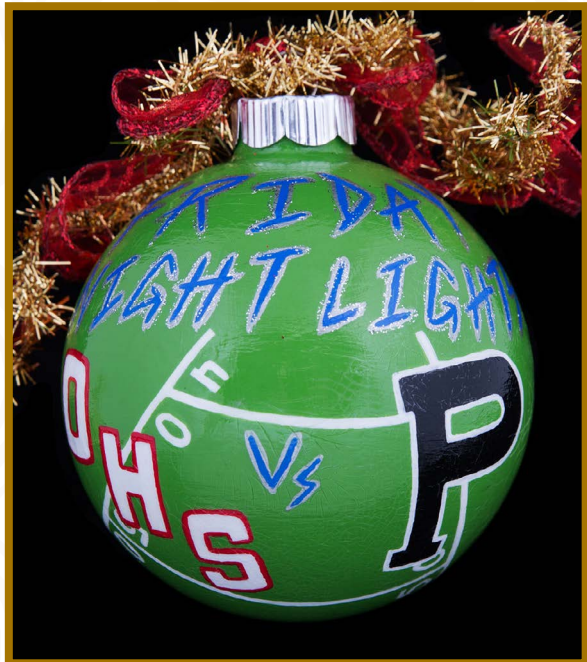
*This ornament represents the pride of the town of Dilley in District 80 — the Dilley Wolves, the athletes of Dilley High School. The ornament features the colors of the Wolves: maroon, grey and white. The lights inside reflect the heart and soul of the small community located in Frio County.*

*Artists: Mayra Lykova and Clay Hines, 11th Grade  
Leah Guerrero, Teacher  
Dilley High School, Dilley ISD*



# REPRESENTATIVE BROOKS LANDGRAF

*District 81*



*This* ornament illustrates some of the most iconic aspects of life in West Texas. On one side, it displays a pump jack and oil derrick silhouetted by an incredible West Texas sunset. On the other, it reminds viewers of the popular Friday night lights in the Permian Basin. Together, they represent two of the most prized commodities in District 81: West Texas energy production, and the rich tradition and rivalry of high school football. Both illustrate the hard work and dedication for which West Texans are known.

*Artist: Jacob Garza, 5th Grade  
(Mrs. Hudson, Teacher)  
Burleson Elementary School*



## REPRESENTATIVE TOM CRADDICK

*District 82*



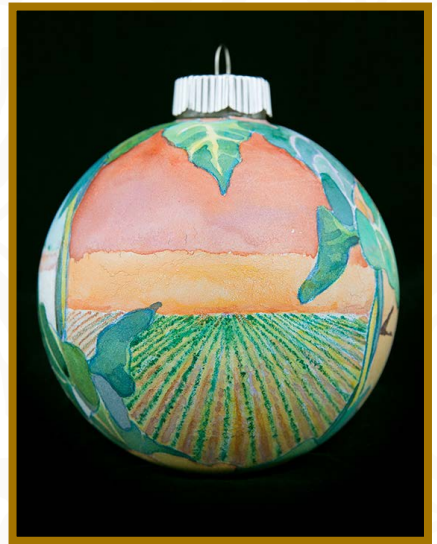
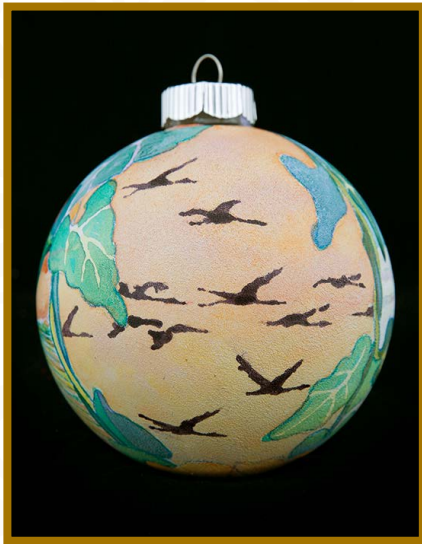
*Midland* is known as the “Tall City,” with its downtown buildings jutting out against a flat landscape. Mostly built during an oil boom in the 1980s, oil plays an important role in District 82. Oil derricks are abundant around the area and dot the landscape.

*Artist: Scottie Mansfield  
Midland Palette Club*



# REPRESENTATIVE DUSTIN BURROWS

*District 83*



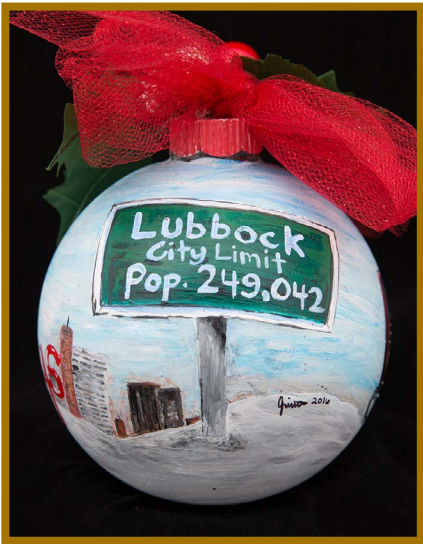
*This* ornament represents three historic elements that helped lay the foundation of West Texas' District 83: longstanding ranching traditions, quality agricultural traditions and the natural environment.

*Artist: Ken Dixon*



## REPRESENTATIVE JOHN FRULLO

*District 84*



*This ornament features Buddy Holly spreading his message of Happy “Holly” days to all Texans. Buddy Holly is a Lubbock native and is well-known around the world for his music.*

*Artists: Juliet Owuor, 12th Grade  
Denise Avery-Moore, Teacher  
Margaret Talkington School for Young Women Leaders*



# REPRESENTATIVE PHIL STEPHENSON

*District 85*



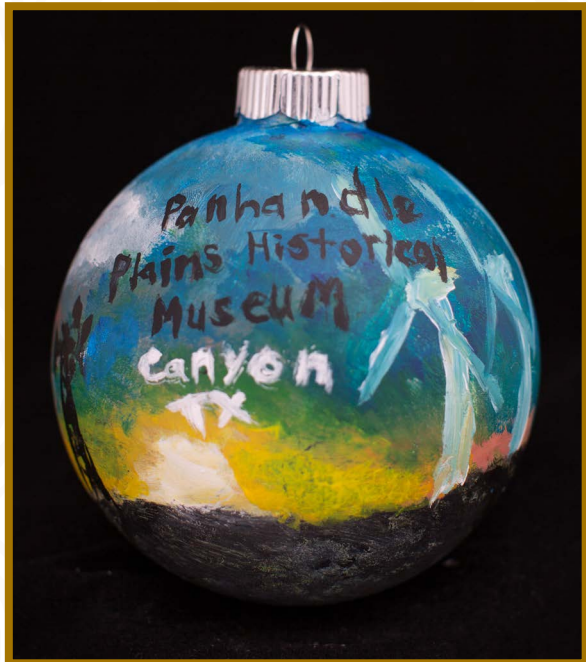
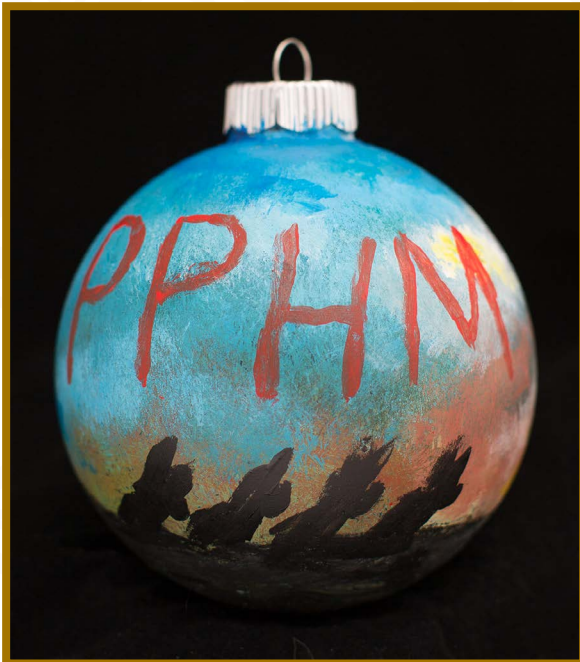
*This* ornament was created in memory of Mrs. Barbara Lynn Stephenson, the First Lady of District 85, who was born July 29, 1948, and passed away September 25, 2016. She worked tirelessly alongside her husband, State Representative Phil Stephenson, as an advocate for Jackson, Fort Bend and Wharton Counties. Known as a selfless and inspirational leader, Mrs. Stephenson leaves behind a legacy of her life's work in bringing communities together. The interior of this ornament symbolizes, through printed ribbons, impressions of Mrs. Stephenson – sincere, helpful, positive, respectful, enthusiastic, giving, devoted and kind, to name a few.

*Artists: Mary Koczanowski and Zina Carter  
Wharton County Junior College*



## REPRESENTATIVE JOHN SMITHEE

*District 86*



*Located* on the campus of West Texas A&M University in Canyon, the Panhandle-Plains Historical Museum preserves the rich history of the Texas Panhandle. This ornament depicts three of the area's iconic landmarks: Cadillac Ranch, the windmill, and wind turbines—bringing together the past, present and future.

*Artist: Slayden Watson, Painting Major, Junior Year  
Panhandle-Plains Historical Museum, West Texas A&M University*





## REPRESENTATIVE FOUR PRICE

*District 87*



*The* theme of this ornament is Amarillo College. It features snowflakes with the “AC” logo over a translucent blue background. A frosted finish with glitter accents completes the winter scene.

*Artists: Victoria Taylor-Gore, Stefanie Carruth and Rose Dukes  
Amarillo College*



## REPRESENTATIVE KEN KING

*District 88*



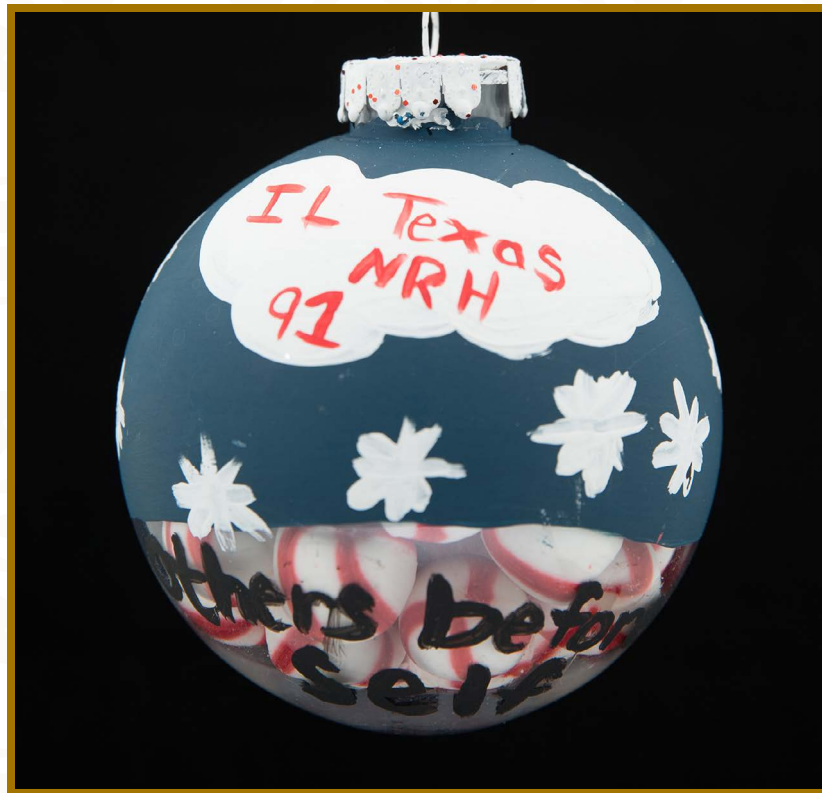
*The District 88 ornament is painted, showcasing a combination of impressionism and hyperrealism, to convey the beautiful canyons of West Texas. The artist was inspired by watching the sun rise beyond Palo Duro Canyon. As the setting and rising sun rests upon the landscape of District 88, the masterpiece it creates is not merely breathtaking, but overwhelmingly peaceful.*

*Artist: Darbi Kelton  
Canadian River Art*



## REPRESENTATIVE STEPHANIE KLICK

*District 91*



*The* painted snowflakes on this ornament illustrate winter in North Richland Hills. The ornament displays the school and community initials of “NRH,” while the peppermints inside represent Rep. Klick’s 30 years’ experience as a candy striper. The ornament also features the school motto, “Others Before Self.”

*Artist: Jasmine Milton, 8th Grade  
(La Gena Blue, Teacher)*

*International Leadership of Texas, North Richland Hills*



# REPRESENTATIVE JONATHAN STICKLAND

*District 92*



*D*istrict 92 is a bedroom community for commuters. While residents may travel in and out of the district for work and for pleasure, their hearts at Christmas—and always—are with family and friends at home.

*Artists: Julie & Lizzy McCarty  
NE Tarrant Tea Party*



## REPRESENTATIVE MATT KRAUSE

*District 93*



*D*istrict 93's ornament features Fort Worth Town Hall on one side and a "93" to represent the district on the other side. The district is blessed to include many cities within its boundaries, and this year's ornament highlights the city of Fort Worth. Merry Christmas from all of the District 93 cities!

*Artist: Thomas Nguyen, 12th Grade  
(Christopher Brown, Teacher)  
Fossil Ridge High School, Keller ISD*



## REPRESENTATIVE TONY TINDERHOLT

*District 94*



*D*istrict 94's ornament is a tribute to "The American Dream City" of Arlington, Texas. It represents the dreams residents are eager to achieve in this great district. The spirit of Christmas is illustrated through the colors used in the city's logo.

*Artist: DeMario Davis*



## REPRESENTATIVE NICOLE COLLIER

*District 95*



*This* unique ornament derives its meaning from the larger perspective. Each glitter particle signifies people in the state of Texas. The Texas flag on the ornament represents blue for loyalty, white for purity and red for bravery. The lone star represents all of Texas and stands for “our unity as one for God, State and Country.” The bow is tied to signify that Texas can pull together and achieve anything. Rep. Collier takes pride in advocating for her district and the entire state of Texas.

*Artist: Josselynn Thomas*



## REPRESENTATIVE BILL ZEDLER

*District 96*



*The District 96 ornament evokes the spirit of peace, in order to allow one to better focus on the real meaning of Christmas. Merry Christmas!*

*Artist: Dawn Horton*





# REPRESENTATIVE CRAIG GOLDMAN

*District 97*



*This* ornament showcases Texas Christian University and the Fort Worth skyline as a celebrated part of the District 97 community.

*Artist: Austin Williams, Sophomore  
Texas Christian University*



# REPRESENTATIVE GIOVANNI CAPRIGLIONE

*District 98*



*Painted* abstract poinsettias, representative of a district that supports the arts and local artists, adorn the ornament for District 98.

*Artist: Leticia Wimer Sedberry*



## REPRESENTATIVE ERIC JOHNSON

*District 100*



*The* gold swirls on the ornament's surface represent the bright lights of the Texas State Fair that illuminate District 100 during the fall. The flowers inside the ornament represent the state's official flower, the bluebonnet, and show residents' pride in being Texan.

*Artist: Rebeca Compean, 11th Grade  
(Mrs. Moreno, Teacher)  
Irma Lerma Rangel YWLS, Dallas ISD*



# REPRESENTATIVE CHRIS TURNER

*District 101*



*The ornament for District 101 depicts two organizations that exemplify the spirit and excitement of southeast Tarrant County: the Texas Rangers baseball team and Tarrant County College.*

*Artists: Jennifer Arias and Brandi Wright  
Tarrant County College Southeast Campus*



# REPRESENTATIVE RODNEY ANDERSON

*District 105*



*The* ornament for District 105 was inspired by the American bison, our national mammal, which once roamed the land from Texas to Montana. The historic nature of these magnificent creatures is offset by a view of modern day Irving, on the reverse side of the ornament.

*Artist: Michael Truly*



# REPRESENTATIVE PAT FALLON

*District 106*



*This ornament features festive scenes from District 106.*

*Artist: Sarah Bergmann, 12th Grade  
Wakeland High School, Frisco ISD*



# REPRESENTATIVE KENNETH SHEETS

*District 107*



*The* District 107 ornament is filled with prayers for the state of Texas and for the United States as a whole.

*Artists: Jennifer, Brynn, Brant & Bryce Borden*



# REPRESENTATIVE MORGAN MEYER

*District 108*



*The* District 108 ornament honors those officers who lost their lives  
in the line of duty in Dallas on July 7, 2016.

In remembrance of:

Senior Corporal Lorne Ahrens, Sergeant Michael Smith,  
Officer Michael Krol, Officer Patrick Zamarripa,  
and DART Officer Brent Thompson.

*Artist: Laurie Harper*





## REPRESENTATIVE TONI ROSE

*District 110*



*The* ornament for District 110 celebrates the colorful skies and trees of this Dallas-area community.

*Artist: Michael Lansangan, Art Teacher  
Young Women's STEAM Academy*



# REPRESENTATIVE ANGIE CHEN BUTTON

*District 112*





# REPRESENTATIVE CINDY BURKETT

*District 113*





## REPRESENTATIVE JASON VILLALBA

*District 114*



*This* ornament, featuring a Texas flag, was inspired by summer road trips across this great state. The grass and bluebonnets are a reminder of the beautiful prairies and grasslands of Texas.

*Artist: Will Hutton, 7th Grade  
Lake Highlands Junior High, Richardson ISD*



## REPRESENTATIVE MATT RINALDI

*District 115*



*This* ornament showcases the Texas state bird, the northern mockingbird, beside the Texas state flower, the bluebonnet, surrounded by a wreath. The reverse side features a monarch butterfly with the Texas state flag in its wings. The ornament represents District 115's desire to treat nature with as much respect as it treats the state—may it never be disrespected or taken for granted.

*Artist: Vy Nguyen, 8th Grade  
(Ms. Carmack, Teacher)*

*Mary Immaculate School, Carrollton-Farmers Branch ISD*



## REPRESENTATIVE RICK GALINDO

*District 117*



*This ornament depicts the mascot of Five Palms Elementary School.  
The eagle represents the pride of the area.*

*Artist: Elsa Alvarado, Student  
Five Palms Elementary School, South San Antonio ISD*



# REPRESENTATIVE LAURA THOMPSON

*District 120*





## SPEAKER JOE STRAUS

*District 121*



*G*irl Scouts of Southwest Texas wanted to represent the strong relationship between the more than 100-year-old tradition of the Girl Scout Gold Award and the award's positive effect on the community of San Antonio. Girl Scouts work to exemplify courage, confidence and character, which help make the world a better place, including the city and surrounding areas of San Antonio.

*Artists: Girl Scouts of Southwest Texas*





## REPRESENTATIVE LYLE LARSON

*District 122*



*This* ornament features a rattlesnake, the mascot of Ronald Reagan High School, wrapped around a “snow”-filled glass ball. The ornament represents students’ spirit and pride during the holiday season!

*Artist: Elizabeth Samuel, 11th Grade  
(Sarah Pagona, Teacher)*

*Ronald Reagan High School Art Department, North East ISD*



## REPRESENTATIVE DIEGO BERNAL

*District 123*



*This* ornament represents how the local artist sees San Antonio. “When I travel, this is what my family and friends think about,” he said. San Antonio is not one single thing, but a culmination of all the people and things seen in the Alamo City.

*Artist: Rex Hausmann*



## REPRESENTATIVE INA MINJAREZ

*District 124*



*S*tudents created this ornament after discussing what makes District 124 unique. The ornament features all three Northside ISD high schools, as well as other prominent local establishments. The community is represented by the district outline on the outside of the ornament and logos inside.

*Artists: Alexander Atuna, Alexa Balderas, Abcde Mireles,  
Jose Coronado, Mycah Glass, Jade Mitchell, Christopher Perez,  
Julia Reyes, Adalina Rodriguez, Julian Vasquez,  
Isabella Vega & Ambra Hernandez, High School Students  
Ambra Hernandez, Teacher*

*Dual Credit Art Appreciation Class 2016-17  
Stevens High School, Northside ISD*



# REPRESENTATIVE JUSTIN RODRIGUEZ

*District 125*



*This* ornament features John Marshall High School's mascot and the Leon Valley water tower from a distance. It is a proud representation of the District 125 community.

*Artist: Tierra Kane, 12th Grade  
John Marshall High School, Northside ISD*



## REPRESENTATIVE PATRICIA HARLESS

*District 126*



*This ornament is painted with an image of the Champions Golf Club in Houston to honor Robin Burke. Owners Jack Burke Jr. (1979 Texas Golf Hall of Fame inductee) and Robin Burke (2016 Texas Golf Hall of Fame inductee) are the first husband and wife team to be inducted into the Texas Golf Hall of Fame.*

*Artist: H.N. McElroy*



## REPRESENTATIVE DAN HUBERTY

*District 127*



*This ornament, entitled “Golf Lake Houston,” represents the Lake Houston area of District 127, which is renowned for its golf courses and country clubs. Golf is a very popular hobby and the area has many avid golfers, including Rep. Huberty.*

*Artists: The Parker Family:  
Jason, Chris, Payton and Sheridan*



## REPRESENTATIVE WAYNE SMITH

*District 128*



*This* ornament is a tribute to Rep. Smith, to thank him for his 14 years of commitment and service to District 128.

*Artist: Monica Gutierrez, Student  
Lee College, Baytown*



## REPRESENTATIVE DENNIS PAUL

*District 129*



*This* ornament depicts a galaxy because the NASA space program plays such an important role in the lives of District 129 residents. NASA not only captures the hearts and imaginations of astronauts, but also those of ordinary people who are inspired by scientific endeavors that could benefit local communities and the world. The people of District 129 are very proud of NASA's contributions to this country's history.

*Artist: Stephanie Lawrence*





# REPRESENTATIVE ALMA ALLEN

*District 131*



*Artists: Sasha Caruthers and Litzy Diaz, Students  
Wheatley High School, Houston ISD*



## REPRESENTATIVE MIKE SCHOFIELD

*District 132*



*The* nativity scene on the District 132 ornament is unique due to the incorporation of bluebonnets, the state flower and a favorite local wildflower. The artist selected a teal-colored background to make the hand-painting on the ornament pop.

*Artist: Shawn Carson*



# REPRESENTATIVE JIM MURPHY

*District 133*



*This* ornament, entitled “All Things HD 133,” features a decoupage collage that celebrates the vibrant west Houston district. Included in this district: the natural beauty of the Buffalo Bayou, Spring Branch ISD’s Altharetta Yeargin Art Museum, schools, churches, close-knit neighborhoods, hospitals, shopping, restaurants and much, much more. HD 133 is a great place to call home.

*Artist: Leann Newton  
Altharetta Yeargin Art Museum*



# REPRESENTATIVE SARAH DAVIS

*District 134*



*D*istrict 134 is home to the Texas Medical Center, the largest medical complex in the world. Through collaboration and innovation, Texas medical teams are pushing the previous limits of treatment and technology use in healthcare. These experts serve as leaders in prevention and public health efforts not only across the state, but also the nation and the world.

The artist was inspired by the fact that even the littlest Texans can make a positive impact individually, and collectively, by making healthy choices. The artist calls upon all Texans to serve as catalysts for change by promoting healthy behaviors in our communities.

*Artist: Ian Anderson, 1st Grade  
St. Vincent de Paul Catholic School*



## REPRESENTATIVE GARY ELKINS

*District 135*



*This* ornament expresses the artist's pride for his new school, Cypress Park High School, the 11th high school in Cypress-Fairbanks ISD and the first to open with only a freshman class. District 135 houses part of CFISD, the 3rd largest school district in Texas.

*Artist: Marc Maler, 9th Grade  
(Jayne Zalewski, Teacher)  
Cypress Park High School, Cypress-Fairbanks ISD*



## REPRESENTATIVE TONY DALE

*District 136*



*The* Eastern screech owl is a charming resident of District 136, and can be observed year-round in the district. This region is blessed with beautiful trees and wooded areas, providing a perfect habitat for the owl. This diminutive bird can be found even in the trees of suburban neighborhoods, often occupying man-made “owl house” nesting boxes. A nesting pair will happily move to this area to raise their young, as have many human counterparts.

*Artist: Heather Powell*



## REPRESENTATIVE GENE WU

*District 137*



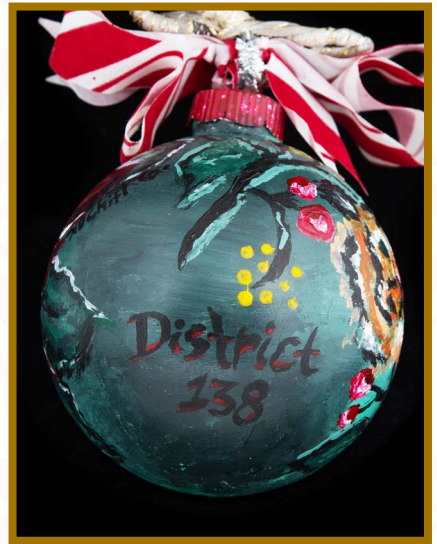
*S*harpstown International School aims to prepare students to be global citizens and to develop their international competence. Students at the school represent over 130 countries and 90 different languages. This ornament is packed with flags from different countries to symbolize the school's international vision. For the students at Sharpstown, Christmas is not only a traditional celebration of the birth of Jesus, but also a chance to inspire students to include people from all parts of the globe in the merriment of this season.

*Artists: Daniela Hernandez Gonzalez, 12th Grade  
and Tina Mai, 9th Grade  
(Junrui Garcia, Teacher)  
Sharpstown International School, Houston ISD*



# REPRESENTATIVE DWAYNE BOHAC

*District 138*



*The District 138 ornament features a tiger, the mascot for Spring Woods High School, and a poinsettia to represent the Christmas season.*

*Artist: Xochiti Gomez, 4th Grade  
(Karen Barnett, Teacher)  
Spring Woods High School, Spring Branch ISD*





# REPRESENTATIVE JARVIS JOHNSON

*District 139*





# REPRESENTATIVE SENFRONIA THOMPSON

*District 141*



*This ornament depicts a bubble gum machine, which represents upcoming changes that will take place within District 141. The machinations of a bubble gum machine represent the machinations of “life’s processes.”*

*Artist: Tiffany Robinson-Jack  
Kipani Unlimited*



## REPRESENTATIVE GILBERT PEÑA

*District 144*



*The* students of the Richey Elementary after-school art program decided to paint a bluebonnet to represent Texas. They worked for several hours after school to design and paint the ornament, adding yellow and green ribbons to represent their school colors. The students said they hope everyone can learn about their school, the town of Pasadena, Pasadena ISD and all of District 144.

*Artists: Jessy Quintanilla, Jennifer Lopez and Yazmine Moreno, 4th Grade  
Kim Tran, Teacher*

*ACE: Afterschool Centers on Education  
Richey Elementary, Pasadena ISD*



# REPRESENTATIVE BORRIS MILES

*District 146*



*Artist: Amelia Kennison-Lewis, Art Teacher  
Westbury High School, Houston ISD*



# REPRESENTATIVE DEBBIE RIDDLE

*District 150*

